

# BURNGREAVE Celebrates Learning!

**Verdon Street, Sheffield S3**  
**Saturday 21st May 2005 12-4pm**



## Activities and workshops:

★ food ★ music ★ sports ★ crafts ★ stalls ★ family fun ★ information ★ workshops

Join in the fun and learn



"learning is fun..."

For more information phone BCLC on (0114) 279 4960

## BURNGREAVE OPEN MIC CALLING ALL

SINGERS • RAPPERS • STORYTELLERS  
 • POETS • COMEDIANS • MUSICIANS ETC

**MON 9TH MAY '05**  
**POETRY MEETS RAP SPECIAL**

guest speakers from  
**POETRY SLAM & HOODZ UNDERGROUND**  
 Refreshments available

**FREE ENTRANCE**  
 1st Mon and 3rd Tues of each month

**WHERE:** The Furnival, Verdon Street  
 Bus route: 47/48 to Rock Street  
**TIME:** 6:30-8:30

### UPCOMING DATES:

Tues	17th	May	'05
Mon	6th	Jun	'05
Tues	21st	Jun	'05
Mon	4th	Jul	'05
Tues	19th	Jul	'05
Mon	1st	Aug	'05
Tues	16th	Aug	'05

**MORE DATES TO FOLLOW**



creative+

Supported by BNDIC Grant Fund

All standards and styles welcome

**SMOKE AND ALCOHOL FREE EVENT**

**FOR FURTHER INFORMATION:**  
**Vincent Turner: 0790 690 6616**  
 email: [gotprod@hotmail.co.uk](mailto:gotprod@hotmail.co.uk)



**HAWKINS PHARMACY**  
 Your Community Pharmacy  
 NHS & Private Dispensing  
 Prescription Collection & Delivery  
 Tel: 275 49 20 For full details  
 149 BURNGREAVE ROAD

**Wicker Pharmacy**  
**OPEN LATE**  
 every day of the year!  
 55-59 The Wicker, Sheffield

**Pitsmoor Dental Health Centre**  
 Dr Alan Moffatt Dr K M Ackom-Mensah  
 wholistic dental care  
 139 Burngreave Road, Sheffield S3 9D1  
 Tel/Fax 0114 272 3076 Mob: 0831 116340

**Burngreave Messenger** Abbeyfield Park House, Abbeyfield Rd, Pitsmoor, Sheffield, S4 7AT. Tel. 0114 2420564 email: [messenger@burngreave.net](mailto:messenger@burngreave.net)

Issue 51

Free to everyone in Burngreave

May 2005

# Burngreave Messenger



**Voice of the Burngreave Community**

Including: Pitsmoor, Ellesmere, Carwood, Firshill, Fir Vale, Pye Bank, Shirecliffe and Woodside

## Sheffield Champions

**Burngreave Saints under 8s football team have had a spectacular season, coming top of their league. They remained unbeaten for all 20 games played against 10 teams from across Sheffield.**



city teams – is to progress into the under nines and “Win everything”.

This night, in a warm club in Burngreave the under eights team can look back on a magnificent season of, 19 victories, 166 spectacular goals, broken noses, and above all winning. Oh, taking part was also important, but not as important as winning.

by Steve Pool

Both © Carl Rose

Walking into the Companion Club at the bottom of Barnsley Road on the night of Friday 21st we could feel the excitement in the air. The smell of popping crisp packets and popping pop coupled with wild under eights dancing let us know something important had happened. As any parent who has ever watched their children play league football knows, pride, honour and voice boxes are lost on the touch line. Imagine an unbeaten run of 20 games, imagine your team at the top of the league table.

Some of the players were proudly talking about their season. They only drew one fixture 2-2 with Hoyland. All

the other games were straight wins. The kids have trained hard on Monday nights with their two coaches Phil and “Blue eyes” named because of the colour of his eyes and the fact the players find this easier to remember. When asked what they liked about football the kids said “Scoring goals and winning” the plan for next year – if too many star players don’t get picked by



**Burngreave Saints under 8s - Unbeaten all season.**



### New Deal elections – Register to vote now!

Inside this month’s Messenger you’ll find your Voter Registration Form, return to New Deal by 13th June.

See page 10 for further details.

### Interested in becoming a Community Representative?

Then why not come along to one of our information sessions to find out more about what becoming a community representative really means?

Information sessions will be held on:

Monday, 9th May, Pitsmoor Methodist Church, 6-8pm  
 Tuesday, 10th May, Carwood Community Centre, 12 noon-2pm



## Burngreave New Deal Anti-Social Behaviour Team

We believe you should be able to enjoy peace and quiet and feel safe and secure in your own home and in the community.

Anti-social behaviour – eg harassment, intimidation, noise nuisance – can cause real misery.

Burngreave New Deal Anti-Social Behaviour Team has three dedicated officers who are here to offer advice and help to all residents.

We hope that you will never need to use our services, but if you do, then please contact us.

### Visit or telephone:

#### Burngreave Housing Office

177 Spital Hill, Sheffield S4 7LF

Monday, Tuesday, Thursday, Friday: 9am–4pm

Wednesday: 9am–1pm

Telephone (0114) 203 9486

Or visit our website at:

[www.sheffieldhomes.org.uk/](http://www.sheffieldhomes.org.uk/)

(Follow the links through 'keeping your estate safe' to the Burngreave New Deal Anti-Social Behaviour Team, where you can report anti-social behaviour online and we will respond to you within two working days.)



## Crime Prevention Theatre for Older People

Play your part in the fight against crime

Verdon Street Recreation Centre  
Tuesday 31st May 2005, 11am–5pm

*Working together to prevent crime against the elderly*

### Workshops and information

- Benefits protection
- Community Wardens
- Fire Officers
- Victim Support
- Safer Homes
- Preventing elderly abuse

### Sessions on how to avoid

- Doorstep crime
- Rogue Traders
- Sneak Ins
- Distraction Burglars

Free personal security equipment.  
Transport, Interpreters.  
Vegetarian/Halal Lunch provided.

For more details contact Ophelia on 292 0459/  
0773 987 8602 or WPC Paulette Brown on  
296 4381 or PC John Shillito on 296 4431



## BNDfC Information Shop 131 Spital Hill

### May Programme – Focus on Older People

#### At the shop...

- Health
- Money Matters
- Housing
- Environment
- Crime
- Work and Jobs
- Courses and Further Education
- Safety and Security

Advice and information sessions on all these issues, especially how they affect the over 50s.

Call in to the Info Shop for a full programme of May events.

Talk to New Deal at the Community Representatives Surgery  
Saturday 28th May 11.30am–1.30pm

#### Out and About...

##### Day Trips – free to the over 50s!

Sat 7th May – to Whitby calling at *Heartbeat* country  
by the North Yorkshire Moors  
Sat 14th May – to The Deep and Bridlington  
Sat 21st May – to the Historic City York  
Wed 25th May – a Mystery Tour

To book your place on trips contact  
Ophelia on 292 0459/0464  
or visit the BNDfC Information Shop.



## Are you a Private Tenant or Private Landlord?

Low Energy Light Bulbs supplied - FREE

'Landlords for Excellence' course  
at Sheffield Hallam University - FREE

House Inspection & Access to  
the Responsible Landlord Scheme - FREE

We continue to run the drop in session for both tenants and  
landlords offering free professional support and advice:

'Drop in sessions' every Wednesday, 2–4pm,  
BNDfC Shop, 131 Spital Hill

For more information tel: 273 4642 or 273 5134

'Private Rented Project', Private Sector Housing,  
3rd Floor, Howden House, Sheffield S1 2SH



## BWRC Children's Project

72 Burngreave Road, Burngreave, Sheffield S3 9DD

## Annual General Meeting

Saturday 21 May 2005, 10:30am–12 noon

*All Welcome*

*Light Refreshments*

*Childcare Available (Call 275 1817 to book)*

We provide a service for children and parent/carers, that affirms strengths  
and dreams and raises the level of educational attainment.

If you are interested in making a difference, the BWRC needs you on our  
management committee – call us on 0114 275 1817 before 19 May.



## Join Our Celebrations

St Peter's Church, Ellesmere – Silver Jubilee

### A Date With Dell

Come and hear the exploits of  
Sheffield author, broadcaster  
and dentist Dell Cook

Tuesday May 10th 7.30pm

Tickets £2 (inc buffet supper)

Tickets available from the Chip Shop, Lyons Close S4



## SIGNPOST GARAGE

Class 4, 5 & 7 MOTs

Up to 16-Seater Minibuses Tested

Auto Electrics, Petrol & Diesel Engine Management  
ABS, Air Bags, Air Conditioning Service, Key Coding

General Electronic Control Module Diagnostics

Smart Diagnostics for Peak Performance

Proprietor: Javed MIRTE, MSOE, MIMI, CAE, LCGI

Tel: (0114) 272 9216  
[www.signpostgarage.co.uk](http://www.signpostgarage.co.uk)

8a Kilton Hill, Sheffield S3 9EB



## BURNGREAVE BUILDING Co.

New Deal Contracts Undertaken

33 Melrose Road, Burngreave, Sheffield S3 9DN

email: [burngreavebuilding@hotmail.com](mailto:burngreavebuilding@hotmail.com)

[www.burngreavebuilding.co.uk](http://www.burngreavebuilding.co.uk)

FREE ESTIMATES ~ FREEPHONE:

0800 083 0669

0114 275 1281  
Mob: 07977 96 41 42



## Pitsmoor Credit Union

Your Local Savings and Loans Co-operative – Join Now!

For more information, phone 273 8555 or come to a Collection Point

Mondays 8.00–9.00pm  
at the Hallcar Tavern, Carwood Estate

Tuesdays 8.00–9.00pm  
at The Rock Public House, Rock Street

Thursdays 11.00–12.00am  
at the Welcome Centre (Christchurch Community Hall)

Office open for enquiries  
Monday–Friday 10.00am–3.00pm

Pitsmoor Credit Union is regulated by the Financial Services Authority. Reg No: 213562

## Health Fair

Saturday 28 May 2005

10am–3pm @ SADACCA, 48 Wicker

Speakers • Stalls • Health and nutrition advice  
Indian head massage • other alternative therapies  
Free lunch • Entertainment after the lunch break

Contact: Yvonne or Coral for further information

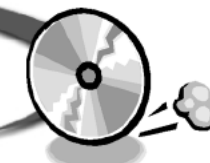
Tel: 0793 240 4476 or 0114 275 3209

Email: [sscatf@compuserve.com](mailto:sscatf@compuserve.com) or [info@yb-international.com](mailto:info@yb-international.com)

Sponsored by: Sheffield Sickle Cell and Thalassemia Foundation and North Sheffield PCT

## Video & dvd rental specialist

**ronian**  
home entertainment



506 Barnsley Road.

Tel: 243 5361

- ★ New releases every week!
- ★ Free membership
- ★ Hire any 2 DVDs or VHS films and get another one absolutely free!!
- ★ Now available a selection of Bollywood movies.

3 VHS • £4  
3 DVD • £5

### New releases for MAY!!!

- ★ Oceans Twelve
- ★ Million Dollar Baby
- ★ Spongebob Squarepants
- ★ National Treasure
- ★ White Noise
- ★ Are We There Yet?
- ★ Boogeyman
- ★ Aviator

### Special Offer

£1 off any film hired with this copy of the *Messenger*  
Valid until 31st May

ANN SUMMERS

To book a party or apply for a job

Call Karen 0784 126 0240

'Reap the Rewards'



### Hair to dye for...

Offering you a creative service in the comfort of  
your own home.

Call Cath for an appointment on: (0114) 243 6985  
or 0789 900 1285.

## Volunteers required...

...from the Burngreave area to help with a  
feasibility study about alternative health  
therapies and whether Burngreave would  
benefit from a Healthy Living Centre.

If you are interested, please telephone  
Yvonne on 0114 263 4258 or

0793 240 4476

or email [info@yb-international.com](mailto:info@yb-international.com) for a  
questionnaire.

*A free facial will be offered for every  
questionnaire completed.*





Dear Messenger

I agree with Kate Atkinson's article 'Asylum seekers' (in Issue 50), where she says that hostility towards asylum-seekers is often due to lack of awareness of their situation. I have got to know asylum seekers from countries all over the world where people have to struggle for basic rights that we take for granted. I have often been impressed and humbled by how people can survive wars, unjust imprisonment or the loss of home and family, and still keep their faith in the possibility of a better, more peaceful life for themselves and their children. I have also been ashamed at the way these friends have been treated by some British people.

There are many people in Burngreave and in the rest of the city who have made rewarding, and even life-changing friendships with asylum seekers and refugees, and who are willing to share their experiences with churches or community groups in the area. If there are any groups which would be interested in learning more about asylum issues, there is a new local awareness-raising project called 'Sanctuary', which has been set up with the support of Inderjit Bhogal from Pitsmoor Methodist Church.

You can contact us at [sanctuarysheffield@fastmail.co.uk](mailto:sanctuarysheffield@fastmail.co.uk).

Craig Barnett

Dear Messenger

I am writing in response to the piece by Rob Smith, the 'Cactus Club Opening', and *Messenger* editorial (page 3, March edition). Having lived next door to a well-run and organised 'blues club' for over ten years, I would have welcomed a positive police presence at any time with open arms. Despite being run efficiently it was impossible to pick and choose who came to the club. While most people were probably local and law abiding, the club attracted people far and wide who weren't. Most people arrived by car and parked with little or no respect to households, blocking driveways (obstructing people getting to work the following morning), and parking on double-yellow lines. Empty cans of *Red Stripe* littered the road from top to bottom due to people having to drink even during the walk from club to car. There were people urinating (and being sick) in gardens, women being beaten in the street, swearing and shouting outside the club while local residents tried to sleep, and people driving off in their cars clearly the worse for wear.

Your article sadly suggests a positive working relationship between the police and Cactus Club is unlikely to happen. It is a must that it does. Making it happen is a two-way process. The consequences of getting this wrong at this early stage are many. The damaging assumptions that the police hold about Burngreave and Pitsmoor are re-enforced, undermining all the good work that's happening locally. It also means we won't have to wait too long before we have the first firearm-related incident outside the club.

I'd like to point out that the police are not required to give people who park illegally a warning, before issuing a ticket. It could have been much worse, and rather than issue parking tickets, they could have breathalysed everyone leaving the club in their cars.

SK Pitsmoor

*The Cactus Club is a licensed premises not an unlicensed 'blues' club. The Messenger is not aware of any complaints about the customers' behaviour. — ed*

Dear Messenger

With reference to the article headlined 'Forum row' in the April edition (Issue 50), the BCAF Co-ordinating committee is concerned that this report on the Quarterly Forum Meeting of 26th February was published despite the fact that no reporter from the Messenger was present at the meeting. The committee wishes to point out that the Quarterly Forum Meeting is open to all Burngreave residents who are able to draw their own conclusions concerning its conduct.

All documents issued at the meeting, including the Chair's report, are in the public domain and the minutes of the meeting, following their formal acceptance, are also available for public scrutiny. It would appear that on this occasion sources were not carefully checked and validated prior to publication. Is it possible to make an accurate diagnosis of a patient's true condition based merely on the hearsay of acquaintances?

John Mellor (Secretary)

For and on behalf of the BCAF Co-ordinating Committee

*The Messenger did have sources at the quarterly forum and had approached BCAT and BCAF for comment but no-one was available — ed*

Dear Messenger

I thought you may be interested in life around Petre Street just over 50 years ago. Particularly in the winter when the snow's arrived. As a young boy it was an event patiently waited for, and especially if it snowed on Friday night as that gave us the whole weekend for sledding.

To get a sledding course to work took some effort and the assistance of lots of kids with sledges, but once the sledge irons had got a shine on them the thrills of speeding down the hills was ecstatic. Smith's Field (the wood) was probably the most popular during the day, but of course at night time it was pitch black apart from the odd moonlit night. So at night we reverted to the streets. Some of the most popular were Lyons Street from Petre Street to Earsham Street, Kingston Street, Jamaica Street (now gone), Canada Street, Carwood Road and Carwood Lane. In those days Kingston, Jamaica and Canada Streets went through to Sedan Street so on any given night from 6pm to 9pm there would be around 20 kids sledding on any one of those streets.

The slippiest was usually the most popular one used. If the snow came midweek we had the problem of the dreaded grit and salt spreader, but with a little shovel work we would manage to cover it again ready for the next night's sledding. Sledding down Smith's Field was very fast and furious. At the bottom was a hump which usually threw the rider off and very often smashed the sled as well.

In the winter of 1952 the snow had been around for quite some time and the track on the field was really fast. During the course of a Saturday afternoon 22 sleds had broken up and my friend and I thought we were invincible, unfortunately I found out the hard way and sailed over the hump and crashed on the side, smashing my sled and becoming number 23 – after that even with lots of repair work it never really ran as well. I now live in Australia and haven't even seen snow for 32 years, but still wonder if the field is still used for sledding.

Gordon Lawton, Renmark, South Australia

## Warden attacked

**Horror has been expressed following the recent violent attack on a female Community Warden, one of eight funded by New Deal, while on patrol on Verdon Street in April. A man has been arrested following the incident.**

"Abuse on wardens will not be tolerated," said New Deal.

They have issued a stern warning to residents saying the attack was cowardly and unprovoked:

**"Community Wardens are part of New Deal and are local residents based in the area. The scheme was actually requested by local people. It is absolutely unacceptable to verbally or physically assault community wardens and the strongest actions will be taken against anyone who does. If there are continued abuses of this scheme and those working for it, then community wardens will have to be withdrawn from the areas in question."**

## Employees unprotected

This most recent attack adds to major concerns that have already caused discontent amidst Community Wardens, both past and present. The allegations are of management complacency concerning the role the Wardens play and their protection and welfare as visible uniformed employees.

## Patrolling alone

"A month after I began as a warden I was directed to walk the streets by myself. This became a big issue for us and, I believe, those who left before I started," confirmed ex-Warden Tanya Bailey. "There were three attacks on patrolling wardens alone while I was employed by them. Luckily it didn't happen to me but it was one of the issues that created a good incentive for many of us to leave."

I spoke to a present worker, employed for just over three months, who informed me they had been told to patrol alone and explained that even one of the youngest male members of the team had regularly been sent out to patrol the streets by himself. "That is until this most recent incident Rob, since then I believe certain procedures, that were well overdue, have now been changed."

At a recent conference involving Community Wardens schemes and City Ambassadors from all around the country it became apparent that patrolling alone was not the norm. "When we told some that New Deal Wardens we're instructed to go out by themselves, they were shocked."

## Wardens are not the police

The Verdon Street attacker accused the Warden of being directly linked with the police. Sheffield Homes, who manage the Community Wardens Project, are anxious to make it clear that the Wardens are not policing Burngreave. They told the Messenger:

**"The wardens are not the police and their job is to identify anything which could be reducing the quality of life in the Burngreave area – and act on it by referring incidents on to other relevant teams and organisations for instance repairs section, Street force, street cleaners etc. Examples of this would be reporting fly-tipping, broken streetlights, graffiti, organising litter removal, reporting abandoned cars, which are causing an eye sore for residents and finding many other ways of improving the area. We want to encourage residents to come up and chat to the wardens as they patrol the area. They are a very friendly bunch and are there to act as friendly neighbours to residents."**

The Wardens themselves have expressed concern about the role they are actually being asked to play. Speaking to a current employee I was told:

**"Most other Wardens around the country issue fines but New Deal refused to do this. But we are instructed to report failure of motor vehicle duty tax, nuisance, anti-social behaviour and fly tipping – if we encounter any forms of direct anti-social behaviour we're told to report this to the office using mobile phones issued for the job."**

by Rob Smith



The *Messenger* agrees with New Deal that attacks on Wardens should not be tolerated. But it's also unacceptable for employers to put their workers at risk.

Unlike other Community Wardens schemes around the country, who always patrol in twos, Burngreave's Community Wardens have been asked to patrol alone. The *Messenger* has also heard that emergency back up and communications are inadequate. While Wardens are issued with mobile phones to call the office, the office is sometimes unmanned.

In this situation is the solution to issue a warning to **all** Burngreave residents to 'behave better or New Deal will withdraw the Wardens'.

The job our purple-uniformed Wardens do will inevitable put them at risk simply because they are out on the street in a uniform. Being asked to perform tasks, such as checking tax disks on cars, can only increase the risk by putting them in conflict with residents. Regardless of their role, any employee walking the streets of a city should have proper systems for support and backup.

**Messenger Info**

**Meetings: 6.30pm, Wednesday at Abbeyfield Park House**  
**Editorial: 11th May**  
**Management: 1st June**  
**All welcome.**  
**Copy deadline: 18th May**

**Burngreave Messenger Ltd**  
**Abbeyfield Park House**  
**Abbeyfield Road**  
**Sheffield S4 7AT**  
**(0114) 242 0564**  
**[messenger@burngreave.net](mailto:messenger@burngreave.net)**

The Burngreave Messenger is a community newspaper, funded by New Deal, with editorial independence. We aim to increase and encourage communication in Burngreave. Each edition is put together by an editorial team who write articles not otherwise credited. This month's team: Farzana Ahmed, Annie Blindell, Clare Burnell, Martin Currie, Andrew Green, Jeff Kirby, Vanessa Kirby, Mark Lankshear, Jamie Marriott, Tim Neal, Steve Pool, Carl Rose, Rob Smith, Gaby Spinks, Kim Streets, Lisa Swift and Paul Taylor.

All content is copyright Burngreave Messenger Ltd or its voluntary contributors, not to be reproduced without permission.



# Masterplan – no wholesale demolition

**Council members announced some significant changes to the Masterplan at a Burngreave Area Panel meeting on Sunday 17th April at Firvale School. It was a well-attended and at times fiery meeting with upwards of 200 people coming in over the course of the afternoon.**

David Shepard, from the City Council Neighbourhood Directorate, acknowledged that significant changes had been made to the Firvale proposals based on feedback from the Fir Vale survey carried out by South Yorkshire Housing Association and after receiving petitions from local residents. The changes are:

- The withdrawal of the wholesale demolitions proposed for Page Hall. Instead there will be local community 'project groups' which will develop a plan for each area. This could include: 2-into-1 conversions, energy efficiency improvements, creating more open space, refurbishment of existing homes and 'selective demolition'.
- Improvements to the road layout at the Owler Lane/Barnsley Road junction leading to the demolition of ten extra properties.

Unchanged from the original draft proposals is the plan to replace the



existing Owler Lane/Barnsley Road commercial centre and build new housing to replace the terraced houses on Skinnerthorpe Road.

There is a commitment that local residents will be given priority for new build properties and there will be community and business 'project groups' to work on the detailed plans for Skinnerthorpe and Owler Lane.

## Residents speak up

One resident asked to see a copy of the household survey and was cheered for

asking, "What does selective demolition mean?" He suggested that there should be a rule that demolition only happens with resident consent.

A vocal group of Skinnerthorpe residents read out a statement saying that they objected to the proposals and had compiled a petition. They wanted home improvements instead of demolition. This raised cheers from the floor. David Shepherd said that 75% of residents surveyed supported the demolition of Skinnerthorpe (see below).

Briefly the meeting became a shouting match with voices calling out – "We're not going to Arborthorne or the Manor". Councillor Steve Jones acknowledged that residents' needed to be confident in any

financial arrangements and being able to remain in the area would be a condition of the demolition plans being approved.

Councillor Jackie Drayton made it clear that the plans have to be approved at the Council Cabinet meeting on the 25th May in order for money to be accessed for Firvale. Steve Jones' concluding statement was an assurance that, "We won't ride rough shod over your views," adding, "Let's get the money".

by Clare Burnell

## Questioning the questionnaire

**Following the Area Panel meeting on 17th April South Yorkshire Housing Association (SYHA) asked the Messenger to verify the accuracy of their results.**

The completed survey forms were brought to the Messenger and we decided to focus on Skinnerthorpe Road because concerns were raised by residents about this street.

After verifying that all 77 forms carried a Skinnerthorpe Road address, the cover sheets were removed to protect the identity of respondents. We compared the database of results, which the SYHA had used to compile the information circulated at the Forum, with the questionnaires.

As far as the Messenger can tell the database accurately reflects the questionnaires we saw. It is impossible to check that each form was completed by a given individual without consulting with them directly. The SYHA state that the survey was carried out in a rigorous fashion with multiple

opportunities offered for people to participate. The Messenger cannot of course refute those individuals who claim that they were not given the opportunity to contribute to the survey.

The findings could be analysed more closely but the Messenger is not in a position to do this. However, we did look at the results for Skinnerthorpe Road. Question 20 asked residents 'If there is demolition should your house be included?' 57% of Skinnerthorpe Road residents responded 'Yes' compared to an average over the whole survey of 37%. This was the highest 'Yes' response to this question apart from Owler Lane, where 78% said 'Yes'.

However, in another question 75% of Skinnerthorpe residents responded that current housing in Fir Vale should be replaced with new houses (Q18), but 81% thought their house was adequate for their household (Q4) and 77% were satisfied or very satisfied with their homes (Q10) and 70% of Skinnerthorpe residents definitely want to remain in Firvale (Q30) if the properties are demolished.

## North Sheffield Primary Care Trust

### Art Therapist

8 hours per week  
Days of work to be negotiated  
Salary: £18,828–21,073 pro rata per week  
(Subject to Agenda for Change review)  
Post Ref: N/S/05/129

### Counsellors (4 posts)

5.5 hours per week (x1 post)  
Includes running groups and drop in. This post may be added onto one of the following posts  
8 hours per week (x3 posts)  
Days of work to be negotiated  
Salary: £18,852–24,808 pro rata per week  
(Subject to Agenda for Change review)  
Post Ref: N/PH/05/130

All the above posts are Fixed-term Contract until 31/03/2008.

North Sheffield PCT in partnership with Burngreave New Deal for Communities are expanding primary care counselling provision in Burngreave area. The service will be based at premises adjacent to Pitsmoor surgery and will service the whole community.

For an informal discussion please ring Menna Yarwood on 0796 714 0543.

An application pack is available from: Sheffield and South Yorkshire Human Resources Service, 5 Old Fulwood Road, Sheffield, S10 3TG

or telephone 0114 271 1340 (24 hour answer-phone)  
or fax details on 0114 271 1188  
or email recruitment.admin@sheffieldsw-pct.nhs.uk.

Application forms and further details can be accessed from our web site on [www.sheffield.nhs.uk/vacancies/](http://www.sheffield.nhs.uk/vacancies/). Please quote relevant reference number.

**Closing Date for receipt of applications: 20th May 2005.**

*The Primary Care Trusts are committed to promoting diversity and equality in the workforce and welcome applications from all sectors of the community.*

**Burngreave Area Panel and Green City Action The Burngreave In Bloom Project** (see opposite page)

### Part-time Gardening Development Worker

12 hours pw, £7.50 per hour plus a 5% pension contribution  
Contract to 30th September 2005

*The applicant must have good knowledge of environmentally-sound gardening methods, good communication skills and a clean driving license.*

For more information contact:  
Green City Action, Abbeyfield Park House, Abbeyfield Road, Sheffield S4 7AT  
Telephone: 244 0353  
Email: [enquiries@greencityaction.fsnet.co.uk](mailto:enquiries@greencityaction.fsnet.co.uk)  
Deadline for applications: Saturday 21st May



## BWRC Children's Project

### Part-time Finance & Monitoring Officer

Fixed-term contract for one year  
Salary: £10k–15k pro rata depending on experience  
Hours: 29 pw

Excellent opportunity to join our expanding community enterprise that provides a quality nursery education and childcare service for children in Burngreave.

Applicants should have proven skills in managing financial and monitoring systems, Microsoft Excel & Word. Working experience of IT is essential. Previous experience of managing the administration of an organisation will be an advantage, or we would consider a training opportunity for someone with two years experience in office administration and IT (Excel). Candidates should be able to work to strict deadlines.

**Closing Date: Monday May 23rd 2005**

For an application pack and informal enquires please call Sharon Brown on 0114 275 1817

*This post is funded by Burngreave New Deal for Communities*



## Emotional well-being workers

The new emotional well-being project, which aims to improve the access for Yemeni men and Pakistani women in Burngreave to emotional well-being services, is looking to recruit two part-time workers.

The project has been set up by Sheffield Care Trust (SCT) with part-funding from Burngreave New Deal for Communities.

The post holders, who will work in the community in Burngreave with members of their respective communities, must write and speak the appropriate language and fluent English, and have a proven record of working with vulnerable people.

**The salaries are both pro-rata of £18,766–20,707.**

Community seminars are being held to discuss these posts and everyone is welcome:

**Yemeni men's seminars** – 7pm, June 6 & 7  
at Yemeni Relief Association, 68 Burngreave Road  
**Pakistani women's seminars** – 7pm, June 8 & 9  
at Firshill School.

**For more information please contact Greg Harrison at SCT on 0114 226 2660**



Sheffield Care Trust







contact: 276 9134

## Burngreave Area Panel

### Sling your rubbish!

The days are getting warmer and longer. Thoughts turn to ‘when are we going to get rid of that old...’ If you live on:

**Burngreave Road** and **Melrose/Coupe Road** triangle, your chance is **10th May**  
**Abbeyfield Road** on **17th May**  
**Scott Road** on **24th May**  
**Osgathorpe Road** on **31st May**.

All Tuesdays – all Bring Out Your Rubbish days with everything out on the pavement by 11am. Last time these areas were done (November 2003) you got rid of 40 tons... we’ll see if springtime increases the tonnage.

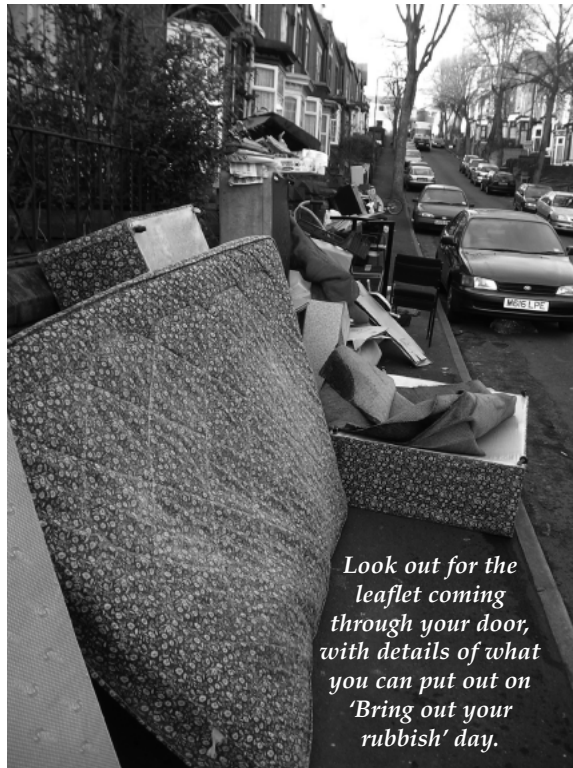
### Community grants

For all voluntary groups – specially those small associations. Marilyn and the Area Panel are running their next round of Community Chest grants with a closing date of 3rd June.

There’s an emphasis on new groups who are looking for support for a ‘one-off’ event – maximum award is £200.

### Burngreave in bloom

The Area Panel is keen to see whether Sheffield as floral capital of Europe can reach into the inner city. More planters and baskets in Page Hall, the top of Barnsley Road this year, and on Ellesmere Green and Spital Hill... and the lights on the trees should soon be on as the lecky meter’s been installed at YEB’s insistence. But we’re also looking at a trial scheme for front gardens and flat balconies later in the spring – hopefully with a big programme next year. You’ll see on page 17 a job advert for a part-time “gardening development worker” – funded by the Area Panel,



whose job will be to help and advise on growing flowers and maintaining attractive gardens.

### The Masterplan

By the time you’re reading this, the Panel will have hosted two big events in For Vale and Burngreave about the Masterplan proposals to strengthen the local housing market, and get the high-quality urban design that residents want.

**Stop press:** The Council Cabinet meeting which will receive the housing Masterplan report has been put back two weeks – now it will be 25th May in the Town Hall.

### Parkwood landfill

Last month there were two other Panel meetings on the landfill site and environmental improvements on the local parks and green spaces. The discussion about the landfill site excited more examination of the PCT’s position, than Viridor as the operator.

As many know, and the Messenger has consistently reported, fears about health are widespread. Jeremy Wight did indeed confirm that some conditions appear to be more likely closer to the landfill, but this evidence isn’t scientifically “conclusive” as they say. Question – does this mean local concerns aren’t valid? Answer – no, but it means different ways need to be found to take residents’ concerns forward.

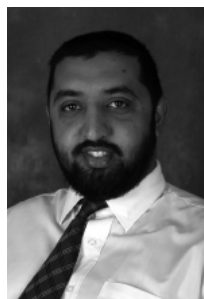
One thing that’s been mentioned (is it since Gibraltar Street closed and City Centre routes have become busier?), Burngreave Road, Minna Road and Rutland Road seem to be carrying many more HGVs with waste...

- 10 May, 5.30–6.00pm, Wensley TARA (Jackie Drayton)
- 14 May, 11.00am–12.00 noon, Burngreave Library (Steve Jones)
- 14 May, 12.15–1.00pm, Firshill TARA (Steve Jones)
- 19 May, 12.30–1.30pm, Firvale Forum (Ibrar Hussain)
- 28 May, 11.00am–12.00 noon, Burngreave Library (Jackie Drayton)

### Next Area Panel Meeting Date

- Thursday 30th June, 6.30pm – details in the next issue.

Don’t forget you can contact the Area Panel and Burngreave Area Action Team at: 12–14 Burngreave Road, S3 9DD.  
 Tel/Fax: 276 9134 Email: burngreave@btconnect.com.



- 5 May, 6.00–7.00pm, Shirecliffe Community Centre (Ibrar Hussain)

## Spital Hill changes

**The final version of the Masterplan will go to the Council Cabinet on 25th May for approval. The New Deal Partnership Board have given it their support and endorsed the controversial consultation process but called on the Cabinet to put a new supermarket back into the heart of the Spital Hill plans. John Clark, New Deal Chief Executive, said its central location was essential for the prosperity of the whole area and the success of their own £10 million investment.**

The final Masterplan now sets out a single three-year programme of work, instead of three phases. It still includes new housing on the site of Ellesmere Old Peoples Home, a redesign of Ellesmere Green and an indoor market on the Murco Garage and comprehensive redevelopment at the bottom of Spital Hill where the new ring road will cross. The planned supermarket on Hallcar Road has been replaced by a wider area where a site might be found.

If approved by Cabinet the Masterplan will be used to bring in Housing Renewal and other money and guide planning permission decisions. The New Deal have approved their own plans for the renovation of the Vestry Hall and Sorby House and then, if everything stays on schedule, a £6.5 million refit of the whole public realm of Spital Hill between February 2006 and February 2007.

### Consultation will go on

When the Masterplan options were first published in October last year they shocked many residents and businesses who saw their premises earmarked for demolition. Angry protests included Spital Hill Local Voice, who raised an 800 name petition and the Business Forum, who refused to approve the plans and consultation.

Now David Shepherd, the Masterplan Programme Director, admits mistakes were made but denies there were ever plans for ‘wholesale demolition’. Following the initial outcry he says they’ve met privately with 95% of local businesses, the Business Forum and Burngreave Community Action Forum (BCAF) and now have ‘general agreement’ with the proposals. But as the Messenger reported last issue only 33 of the 60 businesses the Council spoke to agreed with proposals.

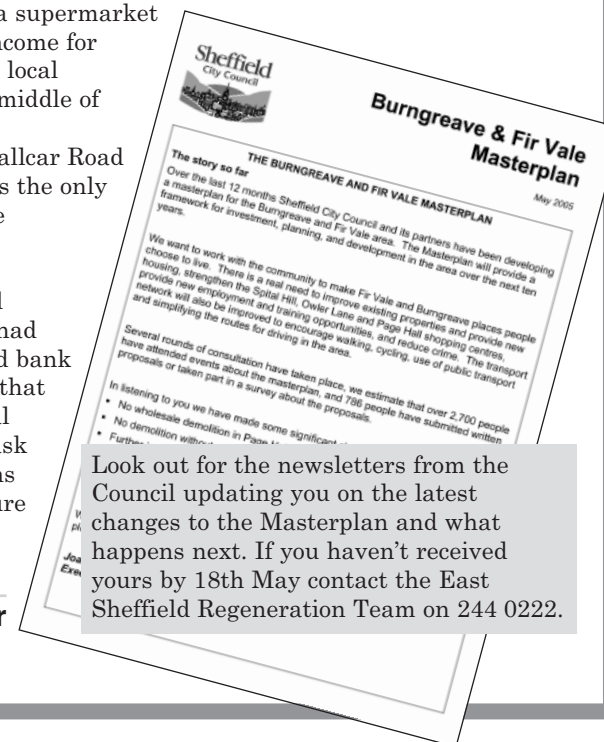
Both New Deal and the Council have committed themselves to ongoing community involvement as the details of the plans are developed. The Council will set up ‘project groups’ for each area, through the Area Panels, and the New Deal Partnership Board will still need to approve individual parts of the Spital Hill refit.

### “We want a supermarket (...and a bank!)”

John Clark said research showed a supermarket would bring local jobs and boost income for other shops, keeping money in the local economy, but only if it was in the middle of other shops. Following talks with supermarket chains he said the Hallcar Road site in the original Masterplan was the only viable option and called for it to be reinstated.

Community Reps on the New Deal Partnership Board said residents had been calling for a supermarket and bank on Spital Hill for many years and that opposition didn’t represent the real views of residents. They voted to ask the Council Cabinet to keep options for the exact site open, but to ensure it would be in the heart of Spital Hill.

by Mark Lankshear



### Funding ends

This month funding for the Recycling Matters project has come to an end. Efforts to get an extension have failed and now it’s unclear if the project will get any further funding from New Deal, or who will be able to meet the New Deal’s aim of setting up local recycling initiatives.

The project opened in October 2003 in the renovated shop on Spital Hill and aimed to raise awareness and establish recycling sites throughout Burngreave. It ran into trouble getting permission from the Council and Onyx to set up recycling points so they haven’t been able to meet all their outputs on time.

SCRAP say they are on the verge of establishing two recycling sites, and recycling bins have been ordered. They hope volunteers will be able to keep the Recycling Matters shop open for at least part of the week.

Although the workers were given notice, right until the last minute they were promised the project would be granted an extension. So it came as a shock when they learnt their jobs would end. SCRAP Ltd, the project managers, say they are still waiting for proper reasons to be given as to why the project was not given its promised extension.

New Deal say they offered Recycling Matters ‘considerable support’. They have also identified three other projects where they have major concerns. They have put ‘Improvement Plans’ in place and these projects will be tightly monitored over the next six months.

### Playground delays

New Deal confirmed that the new building planned for Pitsmoor Adventure Playground is the only project put on hold due to budget cuts.

Following the announcement last month that this year New Deals will get less money, they have asked all projects to make savings. They told the Messenger:

**“It is not our intention to impose cuts on any project but they have been asked to make savings where they can, including New Deal internal projects.**

**“At present the Adventure Playground is not included in the spending plans for this year, though the Partnership Board will review priorities regularly and, if appropriate, new projects will be brought forward.”**



# Routes out of poverty

Over 100 people gathered at the Spectrum Centre for a conference on poverty on Friday 8th April. The aim was to discover ways in which New Deal could contribute to the poverty agenda in the area.

Aisha ‘Special K’ Wilson (New Deal Community Rep) expressed her belief that it is young people who get “a raw deal”. Some, finding themselves in positions of desperation, can feel forced into teenage pregnancy, drug dealing, drug abuse and prostitution.

Keynote speaker was Professor Peter Kemp from the University of York who spoke about his research on routes out of poverty. Those trapped in long-term persistent poverty are often children, lone parents and pensioners.

Workshops were organised, covering issues on families and poverty, debt, savings and credit unions and poverty and mental health.



Literature highlighted that Burngreave remains one of the most deprived wards in the city, second to the Manor, and the area around the Spectrum Centre as one of the poorest in the country.

Although there had been a lot of effort and expense given to encourage people to attend the conference, including a free raffle, a sizable banner put up four weeks prior to the conference and the Community Engagement Team promoting the event, some felt that there was an under representation of local residents. Of the 100 who attended it is believed a third were local residents.

There is no question that action needs to be taken to minimize poverty in Burngreave; the crux of the matter is finding the most successful ways of tackling the issue and understanding its effects for local people.

Special K said we should be providing: “Support services people need, not support services we think they need.”

A comprehensive conference report will be produced soon. To receive a copy contact Ian Clifford on 279 6933.

by Vanessa Kirby

## Kelham Island kids

The Scope Partnership Project was a partnership between Pye Bank School and Kelham Island Museum to involve children in the development and design of new exhibits for the museum’s Science Learning Zone. It is the first time this type of project has taken place, not just at Kelham Island, but nationally.

The best of the children’s designs will be developed by an interactive designer in Phase II of the project. The partnership schools will have the exciting role of being exhibit testers in the Autumn.

Pye Bank Y5 Class and their teacher Mrs Briony Avery came to the museum every Monday for five weeks. This diary was written by Sara Deira Y5.

### Week One

Lorraine, from Kelham Island museum, met us at the Bessemer Converter and told us to meet there if there was a fire. Then she took us upstairs to look at structures and things that are made



out of structures. Then Steve, the science man, gave us tactic poles and spheres, and we made a strong structure that could lift a bag full of beanbags, like a crane. It was the first time we had made a machine like this.

### Week Two

First we answered a quiz with TV handsets, and we pretended we were on *Who wants to be a millionaire?*. Then Steve set us another challenge. Today we took the sellotape, cardboard and mirrors we were given and made a periscope that we used to see things in

front or behind us. Then we went to Scope and played around on the science things.

### Week Three

Exciting, exciting. Today we went to Eureka! We looked at exhibits and we had lots of fun. Lorraine gave each team a camera. We went to see if things were colourful, interesting and fun and if they were good enough to put in Scope. We took photos of each other too.

### Week Four

Today we talked about movement and we made things that change movement. We were asked to make a machine that would make the flag go up and down. I liked everything – except the writing!

### Week Five

This is the last week! We had to build a cart that could travel fast with a lever and by string. We went over the bridge into the Long Gallery and raced them. One fell apart at the start, and one travelled two metres. We laughed at the car that fell apart. The girl’s team won and that was good.

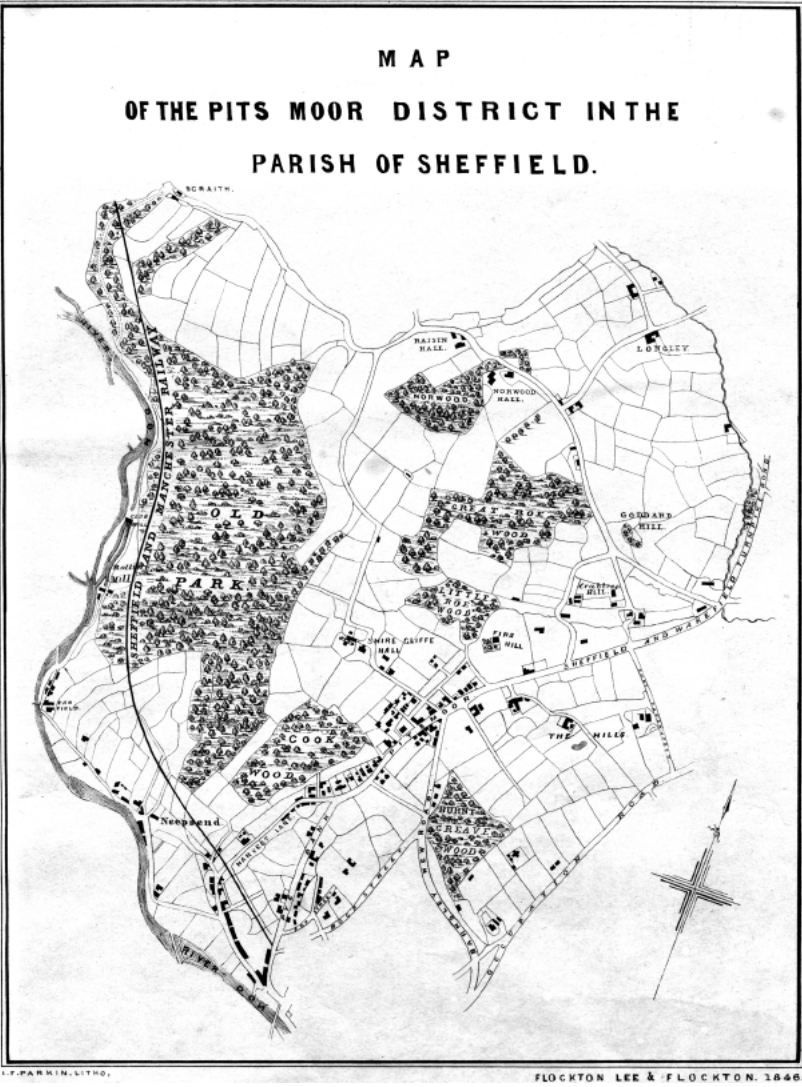
## A Passion for Pitsmoor

Starting a new job in Burngreave last year, I was struck by the discovery that some residents don’t like the way the name ‘Burngreave’ is applied to the whole area. Further investigation on the subject has revealed a group of people who feel a strong sense of loyalty to Pitsmoor in particular. So I went to talk to one, Winnie Bentley, who lives in the landmark Toll Bar House.

Winnie first moved to Pitsmoor when she was married in 1947, to a terrace house on Rock Street. “I’ve always known this area as Pitsmoor, not Burngreave. To my knowledge, this included down Spital Hill to the Wicker Arches, up Shirecliffe Lane and across to Grimesthorpe, not just the bit that we call Pitsmoor village,” she told me. “Oh, it was lovely then! Not a lot of money around but everyone was friendly and helped each other in small ways. I used to be the ‘alarm clock’ for all the houses in our courtyard as well as my own husband, throwing stones at the upstairs windows to get the men up for shift work in the factories. And it was safe – sometimes we forgot to lock the back door at night! Even now, there is still a strong sense of community, especially among the older people.”

Looking at old maps of the area and census records from the 1840s, it’s clear that Pitsmoor existed as a village on the edge of Sheffield when ‘Burnt Greave’ was only a piece of woodland along the Barnsley New Road (now Burngreave Road). Surrounded by fields and farms, the village of Pitsmoor must have been the hub for a largely rural community. Then came the Industrial Revolution in the 1850s, along with a huge demand for labour in the steel mills and houses for the workers. As Sheffield expanded, Pitsmoor became a suburb of the city. When Winnie moved into the area after the Second World War, it was still very much a thriving community, with a cluster of shops in Pitsmoor village providing for all her needs. “There was a grocer, a bread shop, Brown’s Milk (also known as the Beer Off, where you could buy beer and spirits), Helliwell’s (the paraffin and tin shop) and Molly Fantam’s dress shop, where everyone used to go for a natter and where you could buy your dresses on credit. I never needed to look farther. And for a social life we went to the pub.”

Winnie’s house has a lot of Pitsmoor history associated with it.



Built as the Toll Bar House in 1836, it was where all traffic entering or leaving the city had to pay a toll to use the road. “The tolls were collected from what is now the bathroom window in the house, and often sheep were penned up against the railings outside the house if their owners couldn’t pay the toll to bring them into Sheffield,” Winnie told me. “It’s a lovely house, and for my husband, Tom, it was his dream come true when we bought it, but what irked him most was that it had a Burngreave Road address, not Pitsmoor!”

Thanks to Winnie Bentley for talking to me about her experiences in Pitsmoor. If you want to read more about the area, *Parish of Pitsmoor Local History* has recently been republished, available from Christ Church in Pitsmoor at £2.00 each (or on loan from Burngreave Library). If you want to share a story about the area, please contact Burngreave Voices on 276 1900 or call into Burngreave Library.

by Nikky Wilson

Burngreave Voices: Our Stories Celebrated is a Sheffield Galleries and Museums Trust project in partnership with Sheffield Libraries and Information Service, WEA and Sheffield College.

### Burngreave Voices

**"Who do you think you are?"**

An evening to help anyone interested in tracing their family tree.

**Monday 16th May**  
**6.30–8.30pm**  
**at Burngreave Library**

Open to all Burngreave residents – professional advice on hand to help you get started or move on to the next stage.

**For more information contact Nikky Wilson on 276 1900 or email [nicola.wilson@sheffieldgalleries.org.uk](mailto:nicola.wilson@sheffieldgalleries.org.uk).**



# Telling it straight

**Lloyd has been part of Burngreave for over forty years, serving behind the bar in The Catherine, enjoying ‘blues’ and giving time to help set up the Walter Rodney Housing Association. He looks back on the house parties that used to be so prevalent and says they were ‘uplifting’ – a community thing where people could meet, have a dance and enjoy themselves.**

Lloyd had been a qualified builder in Jamaica, but when he came to England in ’61 no-one recognised his qualifications. He ended up doing odd jobs until his work was spotted by a local businessman who offered him a permanent job. He worked his way up until an accident tore a muscle in his shoulder, putting him out of action for more than a year.



*dance and have a drink. All the people were people you knew.”*

Beer used to be sold but drugs weren’t tolerated, “It wasn’t in the open,” people were asked to leave if they were smoking cannabis. He looks back on the time with great fondness and says he’d still go now but he feels it’s all for young people and he’d fear for his safety. “It’s a shame, you take a chance now if you go out, you can’t be sure you’re going to come out alive.”

Lloyd blames people coming from outside Burngreave and the rise in drugs, “A lot of people deal and don’t want to work.” The Catherine pub got a bad reputation in the late ’80s under a different management, “It became overrun with drugs and things, but I was long gone.” In the mid ’80s SADACCA was set up to provide an alternative place for people to go.

Lloyd has lived all over Burngreave and bought his first house on Fox Street. He remembers how everyone used to know and look out for each other. They’d even keep the street,

polishing each other’s steps, until the council moved people in from other estates. A spate of robberies and break-ins forced him out.

*“I’m still in the area now and it’s a very respectful place. Even when the youths are being boisterous they’ll still respect people they know. It’s not the people who grow up here who are causing the problems, it’s some of the people coming in from other areas. Not everyone, some people are genuine.”*

*“It hurts to see the way things go, but I can see efforts and plans being made. I hope it works. What I’d like to see is more community projects – get people working together. The Vestry Hall re-opening again for a cultural purpose – that will help the young ones, as suggested by New Deal.”*

by Mark Lankshear

## Link Bus research

For a PhD research project with Sheffield Hallam University, I would like to talk to local people about their views and experiences of transport in and around the area – eg the B1, B2 and D1 bus services.

If you are interested in taking part in the study, which will involve a short interview with expenses, please get in touch with Christine on: 0161 429 8654/0776 697 4380 or email me at christine.a.whittle@student.shu.ac.uk.

## New research into the needs of Somali visually-impaired people

A research team from the University of Sheffield, working with The Horn of Africa Blind Society (HABS), would like to interview Somali visually-impaired people and their carers, to establish exactly the needs of Somali visually-impaired people living in Sheffield, with a view to improving service provision. The team includes Somali speakers.

To take part in the study, or for more information, please contact Dr Gina Awoko Higginbottom or Kaltum Osman Rivers on 222 8311.

# Area Panel calls for hold on landfill plans

**Viridor have put in a planning request to increase the amount of active waste dumped at Parkwood. At a joint Area Panel calls were made for the judgment to be delayed until a Health Impact Assessment is completed.**

The proposal was made after a presentation by Viridor, the site operators. They plan to dump active waste into Cell 4, a previously agreed buffer zone on the south boundary of the site. One resident pointed out that the buffer zone originally protected the Ski Village. Shirecliffe, Pitsmoor and Woodside are also all within 1km of the southern boundary.

Viridor’s proposals also included a 50-metre buffer zone of inert waste to shield the closest properties on the

Standish Estate. Residents expressed concerns that inert waste, often builders’ rubble, may contain asbestos.

Viridor said they already have permission to dump active waste right up to the boundary if they choose. And if residents support the proposals Viridor claim the site could be closed in eleven years, rather than twenty.

Councillor Jackie Drayton described the proposals as “a compromise” – the extra active waste (including bottom ash from incinerators, domestic and commercial waste) in exchange for a 50-metre buffer zone. Residents said the proposals felt more like a “threat”.

Jeremy Wright, Director of Public Heath for the North PCT presented the interim Parkwood Landfill Site Health Impact Assessment. It shows

significant increases in self-reported symptoms close to the site, particularly bronchitis, chronic obstructive pulmonary disease, skin, nasal and eye irritation and neurological symptoms but more research is to needed to discover if there is a genuine link between the landfill site and ill health. One resident asked if sprays used to reduce flies had been included but Dr Wright said they were not examining their effects. He also told the meeting, he believed the final results would not support a significant link between the landfill and resident’s ill health.

The Area Panel’s request will be taken to the Council’s planning board. Dr Wright told the *Messenger* that the Assessment will be complete in 2–3 months.

by Jeff Kirby

## Parkwood plans

**Two planning applications from Viridor are to be decided by Sheffield City Council on 6th May. These concern a plant to generate electricity by burning gases given off by the decomposition of active waste, and a leachate treatment plant to clean up the liquid which runs off the site before it goes into the sewers.**



*The view of Cells 3 and 4 from Parkwood Springs, looking towards Hillsborough.*

## Campaigns against expansion

**Promises that Parkwood will close early, if Viridor are given permission to deposit active waste in Cell 4, were dismissed by residents as misleading .**

Residents campaigning against this proposal argue waste is already being dumped at a higher rate than in the past, so the active waste capacity of the site will be exhausted within ten years anyway.

Filling Cell 4 with inert waste, as current permissions allow, may take up to twenty years, but Viridor admits that inert waste dumping makes little profit for them, so they may not continue to operate Cell 4 when the rest of the site is full.

A new group based on the private Kingsmead estate, No Extra Landfill Campaign (NELC), is collecting signatures for petitions against the landfill expansion. Signatures can be added at the following places: Norwood Post Office, Herries Road; Neepsend Tyres, Burton Road; Phoenix Taxis, Southey Hill; Ghia Garage, Penistone Road North; RD Taxis at Lane Top or by emailing pantcliffe@tiscali.co.uk.

NELC is objecting to the new fence put up without consultation by Viridor within a metre of the estate boundary. Mature trees were cut down in order to erect the fence, disturbing a colony of bats.

The longer-established Parkwood Landfill Action Group has already submitted a petition of over 500 signatures opposing the plan to deposit active waste in Cell 4 to the Council.

Contact PLAG, c/o Green City Action, Abbeyfield Park House, Abbeyfield Road, Sheffield S4 7AT, parkwoodaction@fsmail.net, www.shefinfo.org.uk/parkwood/.

Commentary by Andrew Green

by Andrew Green



## Earl Marshall Under 9s



**Earl Marshall Juniors FC, our locally based under 9s football team, have just finished their second season together, finishing 9th in the Sheffield and District Junior Sunday League Y Division.**

Although the season had its ups and downs it finished on an optimistic note with the boys putting in some fine performances during February and March. It has been fantastic to see the players' progress over the course of the season, and all those connected with the club are looking forward to the new season.

Earl Marshall recently hosted the first Lovell Cup Tournament. The event provided an opportunity for teams of similar ability to play against each other, allowing them to build on what they had achieved over the season and to give them a realistic chance of winning a tournament. The day was a big success, both as a fundraising event and as an opportunity to raise the profile and community spirit of the club. Sixteen teams took part, with the Cup being won by Whiston Wildcats, who beat Ecclesall Juniors in a tightly-contested final. Hillsborough Pumas were successful in the Trophy competition.

Earl Marshall Juniors are keen to sign unregistered players and are holding trials during the summer. For more information contact me on 276 6916 or Mark Moran-Healy on 0777 645 7732.

by Mick Ashman

## Pitsmoor Girls



**Burngreave's under 11s girls football team have just completed their first season.**

Pitsmoor Girls have been training hard at Pitsmoor Adventure Playground and took part in the Under 11s league. The girls have been scoring goals and making real improvements through the season, and are looking forward to winning matches next season.

The team will be training once a week through the summer, with female coaches from Burngreave Sports Project. If you'd like to join in come to Pitsmoor Adventure Playground on Tuesdays 5–6pm, or contact Burngreave Sports Project on 273 4266.

### Bungreave Mile Run – 19th June 2005

Volunteer road stewards, first aid workers and race officials wanted. If you are interested in registering as a volunteer and helping to make this event a success – contact Rafiq Saleh of Bungreave Sports Network on 241 9100

Information stalls, displays and catering pitches will be on Petre Street Playing Field and must be booked in advance. Contact Patrick Edwards on 0774 783 1856.

## Mr Jolly

**After a disappointing result last season, coach of Burngreave under 7s football team, Rob Jolly, is hoping to recruit more players to the squad.**



“We have some great players but there are just not enough available to cover substitutes and absences.” He feels this could be why the team lost ten out of the twelve league games played.

“We are looking for mums and dads to spot the potential in their children and bring them along. It is a fun atmosphere for the kids and their parents. We like to encourage parents to join in with the team spirit on match days.”

Rob is also encouraging parents with some time to spare to get involved. “We could do with an extra coach or two to help out with the training and on match days.”

A refreshment stall is available when they play matches on Petre Street playing fields.

The football training is held every Wednesday at Sheffield United training facility from 4.15–5.30pm. The training lasts throughout the summer months in preparation for next season.

Contact Rob Jolly on: 281 6885 or 0781 365 8320.

by Carl Rose

# BURNGREAVE Celebrates Learning!

**Burngreave's Learning Campaign is going all out to celebrate Adult Learners Week, starting with a Festival of Learning on 21st May (see advert on the back page). The activities continue throughout May - here are a few of the courses you can take part in...**

### Herbs for health



This taster course is designed to give people an insight into which plants can be used as food and even to improve health and well being.

Dandelion roots for instance are good for the liver; chick weed can add a new flavour to salads, and nettles can be

brewed up into a refreshing tea.

The course will explore plants people can grow in their own gardens – such as garlic, rosemary, mint and sage for herbal teas – and non-native plants, such as ginger can be added to the mix to create a range of herbal treatments.

Run by a herbalist and an ecologist, the emphasis will be on the fact that many plants do have a use – and some can be an important element in holistic healing.

**Native Plants of Burngreave and their Herbal Uses. Guided walk: Wednesday 18th May. Meet at 6pm at Abbeyfield Park House.**

**Firth Park Community Arts College**  
*presents Adult Education Classes*

**Mondays**  
Keep Fit 6–7pm (Free)

**Tuesdays**  
Yoga 4.30–5.30 pm (Free)  
Pottery 5.00–6.30pm (Free)  
Tai Kwon-do 6.30–8.00pm (Free)  
Hand and Nail Care 6.30–8.30pm

**Wednesdays**  
Cookery 5.00–7.00pm (Free)

**Free Family Learning Day**  
Saturday May 14th 2005  
10.00am–3.00pm  
Free fun activities for all the family, lunch provided.

For more information contact:  
Panni Poh Yoke Loh, Community Education  
Co-ordinator • Fircroft Avenue, Firth Park,  
Sheffield S5 0SD • tel: 0114 257 4027



**Herbal Workshops: Wednesday 25th May and Wednesday 1st June. Please book by 17th May. Contact Burngreave Green Environment Programme on 278 9651.**

### Health & Beauty Day

Health and well being are also the key themes at a Health and Beauty Day for women at St Catherine's School. Organiser, Rashida Hassanali, believes that the confidence that comes from a sense of well being is the key to looking good. She quotes the example of a woman who came to a reflexology session suffering from depression. The reflexologist identified the cause as a stomach problem and set the woman on the way to feeling better.

“We're planning to look at a number of health issues on the day – comfort eating, body fat, and eating for well being, and offering some tasters as well – aerobics and yoga for instance,” said Rashida.

People can also find out about other courses offered St Catherine's and at Firs Hill. They range from stress management to Tai Kwon-do and from yoga to aromatherapy and reflexology.

**Health and Beauty Awareness Day: Thursday 26th May at St Catherine's School: Women only. Contact Rashida Hassanali on 0777 358 3699.**

### Learning with SCRAP

**A guided tour of local recycling/re-use groups. Friday 20th May. Meet 11 am at Recycling Matters, 127 Spital Hill. Visits to: Welcome Home furniture service, Booler's Biofuel, Sheffield Children's Scrapstore and Green City Action's Tool Bank, Toy Library and Biomass scheme. Refreshments served at New Roots Café.**

**Car boot sale, Recycling and Compost Information Day: Sunday 22nd May. Gower Street Car Park 11 am–4pm.**

**Silver Surfers' Day: Friday 27th May. Drop into Recycling Matters to see what's on offer for the over 50s.**

For more information call 275 5055.

### Telephone Skills

For anyone whose first language is not English, using the telephone can be daunting.



SPAT-C tutor, Pedro Fuentes, explained that when people are struggling with a foreign language they use their hands and their bodies a lot, and pick up clues through people's body language and faces:

**“When they use the telephone, none of those clues are there and they have to rely on language alone. The problem is that the telephone is increasingly the key to almost every service a refugee needs.”**

Key tips on the course are:

- Practise
- Rehearsing what to say
- Writing down key words
- Speaking slowly and clearly
- Checking you have understood the reply

**Thursday 26th May 1.00–3.00pm. To find out more about this and other SPAT-C courses contact Pedro Fuentes on 275 6815.**

**For more information on Adult Learning week, check out the Learning Campaign's website: <http://learning.burngreave.org/> or call 279 4960.**





## 'Close to the Heart' Art Exhibition

by Male Students at Firth Park  
Community Arts College  
and Burngreave Men Artists



curated by Panni Poh Yoke Loh  
Community Education  
Co-ordinator - Firth Park  
Community Arts College



at 'The Workstation'  
Paternoster Row, Sheffield

Monday May 16th-  
Tuesday May 31st 2005

You are invited to the  
Opening Night  
Monday, May 16th, 7pm



For more information contact:  
Panni Poh Yoke Loh  
Community Education Co-ordinator  
Fircroft Avenue, Firth Park,  
Sheffield S5 0SD

Tel: (0114) 257 4027

## Burngreave Green Environment Programme Events in May

### Wednesday 11th May - Funny Bunnies

10am-12 noon. Abbeyfield Park.  
Bring down your little ones for a day  
of fun with baby animals in the Park.  
Contact Burngreave Rangers on  
278 9651.



### Thursday 19th May - The Heritage and Trees of Roe Wood

6.30pm start. A guided walk with local expert Mel Jones and  
the Community Forestry team to explore the heritage of your  
local woods. Contact Community Forestry on 273 4190.

### Sunday 22nd May - Osgathorpe Park Playground

10.00am-4.00pm. Osgathorpe Park playground & Devon  
Gardens. Come and play on the new playground! Work with  
the Friends of Osgathorpe Park on designing some mosaic  
artwork for the playground.

### Every Tuesday - After School Drop-in Sessions

3.30-6.00pm. Osgathorpe Pavilion. Drop in to the Pavilion  
and meet Matt, BGEPP Youth Worker, and Henk, of the Green  
Watch Rangers, for fun things to do in  
Osgathorpe Park. Contact Matt on 278 9651.



## Classical Reggae hits Burngreave

**London Reggae Philharmonic Orchestra  
honoured Burngreave with the presence of its  
extraordinary diverse multicultural group of  
classical musicians.**



© Carl Rose

Invited to the  
area by Creative  
Burngreave,  
their first stop  
was Fir Vale  
School, where  
children sat as  
they were about  
to be entertained  
by something  
really special.

Six violin  
players, one  
keyboard player,  
one drummer  
and bass  
guitarist along  
with two  
percussionists,  
began playing  
together, after  
the sound of a  
single violin  
being played.  
The well-  
deserved and

respectful burst of applause came from the young audience  
and teachers in attendance.

Introducing *The Tree Song* allowed the orchestra to  
demonstrate the sound of a bass guitar being joined by the  
drum. The drum and the bass joined by percussion rattles and  
shakers preceding the piano skanking sound an introduction  
to the violin players sounding in on cue.

The ten-piece orchestra receiving humongous applause from  
the performance before limbering up to do a workshop  
interacting with this group of school children.

Their main performance was at 6.15pm at the Spectrum  
Centre, as part of Creative Burngreave's launch of the new  
funding round, alongside an entertaining display of other  
creative community initiatives funded in 2004.

Prior to the Orchestra was the screening of 14 short films  
followed by performances by local artists and groups. Zwakala  
African dancing and singing, Abort Comedy, Arabic dancing,  
Midnight Gardener and a performance of Irish dancing.

Later I spoke to Mykaell S Riley, director of the Black Music  
Education Technology London Philharmonic Reggae  
Orchestra.

*"We began back in 1989, looking at ways to represent black music  
via classical instruments. There is a misconception that Black  
people have played no part in classical. Black people have had a  
long-standing relationship with classical music represented by  
people like Samuel Coleridge and Hugh Taylor."*

*"We are also keen to show music played by live instruments in  
contrast to music created by computer technology. Also showing*

*the role models that are reflected in the diversity of the members  
you see performing in this orchestra."*

This multicultural diversity Mykaell spoke about was reflected  
in the harmonies and music played throughout the orchestra's  
performance.



© Anwar Suliman

*"When we were in the school, I found the kids relaxing instantly  
to rhythm and melodies. I also felt the orchestra was more  
approachable, because our members look like many of their own  
mothers and fathers. The workshops went really well and they  
were fun, which is a key element. This also gives the children  
something to aspire towards."*

by Rob Smith

## Burngreave Messenger

**The Burngreave Messenger Ltd  
is seeking a  
Business Manager**  
30 hours per week • £25,854 pro rata

Would you like to join our committed team of staff and volunteers to  
help the Messenger become a thriving community enterprise serving  
local and citywide organisations and businesses?

We have an exciting opportunity to appoint a dedicated business  
manager to improve, promote and expand all our business activities  
and help us to plan the Messenger's long-term future.

If you have experience of media, design and advertising, project and  
staff management, business planning and voluntary sector funding,

And you are committed to the Burngreave area, its people and the  
Messenger's aim of increasing communication in the community,  
We'd like to hear from you.

For more information and an application pack  
contact the Burngreave Messenger:

Abbeyfield Park House, Abbeyfield Road, Sheffield S4 7AT  
Telephone: 242 0564 or email: [messenger@burngreave.net](mailto:messenger@burngreave.net)

To find out more about the Messenger, visit our website at:  
<http://www.burngreavemessenger.org.uk/>

**Closing date for applications:  
Monday 23rd May, 4pm**

## BLOOD BROTHERS BY WILLY RUSSELL & THE ACCRINGTON PALS BY PETER WHELAN



**SATURDAY 21ST MAY  
2:00PM & 5.30PM**

**FREE PERFORMANCE  
Hosted by 'Green City Action'**

Be prepared to wrap up warm,  
refreshments available

Abbeyfield Park, Abbeyfield Road, Burngreave  
Please phone 0114 244 0353 for details



## Year 3 Funding

The deadline for funding applications  
has been extended  
to 13th May 2005

Funding to support  
and fund arts projects  
within Burngreave through  
the Creative Burngreave  
Project Grant.

**creative  
burngreave**

Grants available up to  
a maximum of £4,000.

The total project grant is £42,500.

For more information and  
an application form, contact:

Alka Prabhakar on 0114 221 1891  
Creative Burngreave  
Sheffield Arts Education  
Arundel Street  
Sheffield S1 2NS





# Burngreave New Deal for Communities Elections 2005

**It's Your Right To Vote – Don't Miss Out!**

Everyone who lives in the Burngreave New Deal for Communities area is entitled to vote in the forthcoming elections for community representatives, including those without residency status from the Home Office and those who have just moved into the area. The election register has also been extended to include everyone over the age of 15.

In order to vote, your name must be on the New Deal election register – but it will be closing on 13th June, so don't miss out – make sure you are registered to vote.

If you are not sure whether you are on the register, contact the New Deal Information shop on Spital Hill on 292 0464. You will not be on the register if you are not on the national public electoral register or you are under 18 or you have recently moved to the area. If you are not registered, fill in the form inside this issue and return it as soon as possible to the Information shop on Spital Hill or post to **FREEPOST BNDfC** (no stamp required and do not write anything else on the envelope).

## Xaq ayaad u leedahay in aad ka qayb qaadata doorashada oo aad codeyso – ha dayicin!

Qof kasta oo ku nool xaafada Burngreave ee uu ka howl galo mashruuca Jaaliyada ee New Deal xaq ayuu u leeyahay in uu codkiisa ka dhiibto doorashada soo socota si uu ugu codeeyo xubnaha matalaya Jaaliyada. Dadka aan wali Laanta Socdaalka (Home Office) ka helin jawaab ku saabsan xaaladooda degaanaanshaha iyo dadka dhowaan usoo guuray xaafada Burngreave 'ba wey codeyn karaan. Diiwaangelinta doorashada waxa lagu daray in ay codeyn karaan dhalinta ka weyn 15 jirka.

Si aad u codeyso waa in magacaagu ku qoran yahay liistada diiwaanka doorashada ee New Deal. Is diiwwangelinta waxa la xidhayaa 13ka Juun, markaas ha dayicin. Hubso in aad diiwaan gashan tahay si aad u codeyso.

Haddii aanad hubin in aad diiwaan gashan tahay, la xidhiidh Dukaanka Warbixinta ee New Deal ee ku yaala Spital Hill addiga oo ka wacaya 292 0464. Magacaagu kuma qornaan doono liiska doorashada haddii aanu markii hore ku qorneyn Liiska Diiwaanka Doorashada guud ee dalka ama ay da'daadu ka yar tahay 18 jir. Haddii aanad diiwaan gashaneyn buuxi arjiga warqadan xaggeeda danbe, kuna soo celi sidda ugu dhakhsaha badan Dukaanka Warbixinta ee New Deal ee ku yaala Spital Hill ama kusoo dir cinwaanka ah **FREEPOST BNDfC**. (Uma baahniid in aad shati ku dhajiso ama aad wax kale ku qorto boqshada).

**انة من حقك أن تصوت في الانتخابات - لا تضيع تلك الفرصة**

نيو ديبل برنجراف منطقة يعيش في ان كل شخص أن يصوت في الانتخابات المنتظرة لممثلي له يُسمح للجاليات من وزارة الداخلية و إقامة متضمنًا هؤلاء بدون، لجالية اتسجل الانتخاب ان ي المنطقةال هؤلاء الذين فقط قد انتقلوا اكثر من 15 سنة ةعمر يشمل كل شخص قد امتد أيضًا ل

نيو ديبل يجب أن يكون اسمك على سجل، لكي تصوت لا تضيع لذا، يونيو 13 لكته سيقلق في - ي انتخاب لأ للتصويت تم تسجيلكأكد أن؟ تلك الفرصة

صل بمحلّات، على السجلّ ان اسمك إذا كنت غير متأكدًا على Spital Hill نيو ديبل في سبيل هل معلومات لن تكون على السجلّ إذا أنت لست على قائمة . 2920464 أو حديثًا قد انتقلت سنة 18المنتخبين العامة القومية أو أنت تحت املاً الاستمارة على، سجلّكنت غيرم إلى المنطقة. إذا ما يمكن إلى محلّ المعلومات بأسرع رجعتهاالصفحة المقابلة وأ إلى ارسلها بالبريد المجاني أو هل ي سبيلف بريد طابع تحتاج الى ؟ ( لا FREEPOST BNDfC ).(آخر على المظروف يءكتب أي شت و لا

**ووٹ دینا آپ کا حق ہے اسے ضائع مت کریں۔**

برن گریو نیو ڈیل برائے کیونٹیز کے علاقے میں رہنے والا ہر شخص، اگلے آنے والے کیونٹی نمائندوں کے الیکشن میں، ووٹ دینے کا حق دار ہے۔ ان میں وہ لوگ بھی شامل ہیں جن کے پاس ہوم آفس کی جانب سے رہائشی حق موجود نہیں ہے اور وہ بھی جو ابھی ابھی اس علاقے میں رہائش پذیر ہوئے ہیں۔ پندرہ سال سے زیادہ کی عمر کے ہر شخص کو شامل کرنے کیلئے، الیکشن رجسٹر میں توسیع بھی کی گئی ہے۔

ووٹ دینے کیلئے ضروری ہے کہ آپ کا نام نیو ڈیل الیکشن رجسٹر میں موجود ہو لیکن یہ رجسٹر 13 جون کو بند ہو جائے گا۔ اس لئے موقع مت ضائع کریں اور اس بات کو یقینی بنائیں کہ آپ ووٹ دینے کیلئے رجسٹر ہوں۔

اگر آپ کو اس بات کا یقین نہیں ہے کہ آپ کا نام رجسٹر پر موجود ہے یا نہیں، تو سپٹل ہل

پر موجود نیو ڈیل انفارمیشن شاپ پر، اس نمبر پر رابطہ کریں؛ 292 0464

آپ کا نام رجسٹر پر اس وقت تک نہیں آسکتا جب تک کہ آپ نیشنل پبلک الیکٹرول

رجسٹر نہیں ہیں۔ یا آپ کی عمر اٹھارہ سال سے کم ہے یا آپ حال ہی میں اس

علاقے میں رہائش پذیر ہوئے ہیں۔ اگر آپ رجسٹرڈ نہیں ہیں تو سامنے دیئے گئے

فارم مکمل کر کے جتنی جلدی ہو سکے، سپٹل ہل پر موجود انفارمیشن شاپ پر پہنچائیں یا

این ڈی ایف سی کو (فری پوسٹ) ارسال کریں (لفافے پر ڈاک ٹکٹ لگانے اور کچھ

لکھنے کی ضرورت نہیں ہے)۔

## New playground for Osgathorpe Park



**Local residents from Friends of Osgathorpe Park have successfully fundraised to get a brand new toddler and junior playground installed. Since local children opened the playground in April, it has been non-stop play.**

The first phase of the park's improvements is nearly complete. One of the most popular parks in Burngreave, Osgathorpe Park has been crying out for regeneration for a number of years. Local people have been thrilled with their efforts over the last year. Improvements include new entrances, allowing

wheelchairs and pushchairs to make easy entrance into the park, graffiti removal, clearance of sight lines so users feel safer, regular litter picks, a brand new art mural, bulb planting, benches and now a dog-free area with play facilities for families to play safely!



The hard work doesn't stop here; the group are still fundraising for more artworks, benches, bins and sports facilities for older children in the park.

If you live near the park and think you could help support the Friends group, then they need your help! For information on how to join and what help you could give call the Burngreave Green Environment Programme office on 278 9651 or email [bgep@wildsheffield.com](mailto:bgep@wildsheffield.com).

## Youth drop-in

**The New Deal Community Engagement Team have set up a youth drop-in centre within the New Deal Information Shop on Spital Hill.**

"This is part of a six-month trial to see if it is a feasible method of engaging some under-represented groups in and around Bungereave..." explained Leroy Betts.



*New Deal Engagement Team run activities to engage young people – here seen on a trip to Old Trafford in Manchester.*

125 young people have accessed some form of support from this initiative that closes on 22nd May, although support and information for young people will stay available throughout the year. "This overall plan has used small activities to attract young people, once engaged they are given support advice and information" said Leroy.

by Rob Smith

## Second Steps

**Through the Messenger we would like to thank all who attended our health day, which was held on 12th March. Everyone enjoyed the full health programme that was laid on.**



People from Burngreave and the surrounding neighbourhood made it an eventful and successful day. Feedback was positive, and people asked when the next event will be.

We thank the *Messenger* for their contribution, through the advertisement in making it so: "Keep up the good work."

For more information about Second Step call 225 8124.

**by Muriel Richards (Secretary) on behalf of the Second Step Caribbean Women's Group (Age Well)**