

Scenes from the festival



Positive Negatives 8th Film Festival

Admission
FREE

Friday 6th August – Sunday 8th August
at the Spectrum Centre, Burngreave

Showing a selection of films for all age groups

- Film makers are invited to submit their short films to be screened.
- Information about Yorkshire TV's one year work experience programme for ethnic minorities
- Yorkshire TV trainees will be presenting a short film.
- A representative from the British Film Institute will speak on opportunities within the Institute.

For a full programme and other information:
Tel: 281 2319 or 0798 532 8594

Send your film to:
Positive Negatives
Unit 8, 120 The Wicker, Sheffield S3 8JD



Associated Chemists
OPEN LATE
every day of the year!
61-65 The Wicker, Sheffield

Pitsmoor Dental Health Centre
Dr Alan Moffatt Dr K M Ackom-Mensah
wholistic dental care
139 Burngreave Road, Sheffield S3 9D1
Tel/Fax 0114 272 3076 Mob: 0831 116340

HAWKINS PHARMACY
Your Community Pharmacy
NHS & Private Dispensing
Prescription Collection & Delivery
Tel: 275 49 20 For full details
149 BURNGREAVE ROAD

Issue 43 Free to everyone in Burngreave August 2004

Burngreave Messenger



Voice of the Burngreave Community

Including: Pitsmoor, Ellesmere, Carwood, Firshill, Fir Vale, Pye Bank, Shirecliffe and Woodside

Multicultural Festival Splendor



Without a show from the sun the people of Burngreave and surrounding area weren't to be deterred from flocking into Abbeyfield Park on Sunday 11th July 2004.

Again the vibrant sound of diversity in music and many voices, of fun, joy and games marked the annual multicultural celebration of rich diversity belonging to the community of Burngreave.

Green Top Circus trapeze acts entertained the many, while football contained those outside the dance hall tent. Workshops, included samba bands, drums, DJ workshops and face painting, combining with continuous stage acts throughout the day.

Thanks go out to all the Green City Action members and volunteers who have worked hard to make this event a success enjoyed by so many.

Even if you missed it on the day you can still get a taste of the many musical flavours from the main stage (courtesy of Sheffield Indymedia and Commedia) by visiting the download link on our website.

For more pictures of this year's festival, see the back page...



All © Carl Rose



This weekend!
Osgathorpe Jam – One Love Festival
1–9pm
Sunday, 25th July
Osgathorpe Park

Find out about summer activities for young people in this year's *What's going on?* booklet. To get your copy contact Verdon Recreation Centre on 249 1626.



What's going on?

Activities for kids and their families in Burngreave for Summer 2004 and beyond...

Community Employment Awareness Day

jobcentreplus

Part of the Department for Work and Pensions

Entertaining and instructive fun day for all the family

Wednesday 11th August 2004
10.00am to 4.00pm

at the
Pakistan Muslim Centre
Woodbourn Road, Darnall

Advice available on Jobs and Training Opportunities

Employers attending include:

South Yorkshire Police, South Yorkshire Fire & Rescue, Sheffield City Council, NHS, Sheff Care, Square Mile Training, Sheffield Homes, Benefit Advice Team, Sheffield Action Team & others

Bouncy castle, refreshments, skilled demonstrations (bricklaying, joinery, needlecraft), IT awareness sessions.

For further information please contact:

Jackie Last (0114) 2590718 or
Irshad Akbar (0114) 2436091

sheffield
ACTION
team



Burngreave New Deal
Anti-Social Behaviour Team and Police Team

Evening drop in session
at Burngreave Housing Office

5-7pm

Wednesday 4th August 2004
Wednesday 1st September 2004

The drop in session is for advice on Anti-Social Behaviour and to report Anti-Social Behaviour

We deal with Housing Associations, Private tenants, Owner occupiers and Sheffield City Council/Homes Tenants so **everybody** is welcome

A local Councillor will also be present between 5-6pm

Translation Services will be available

Please note that no other Housing Services eg repairs, rehousing will be available at this time. For queries of this nature please contact Burngreave Housing Office during normal office hours

If you are unable to attend but wish to discuss Anti-Social Behaviour please contact the Anti-Social Behaviour Team on **(0114) 203 9486**.

**Planning on returning to work now
that the children are at school?**

Why not let Home-Start give you a hand?

We are currently looking for volunteers to offer regular support, friendship and practical help to young families under stress in their own homes, helping to prevent family stress and breakdown.

By becoming a Home-Start volunteer you will benefit from:

- An Open College Network accredited training course.
- The opportunity to develop your personal skills.
- The opportunity to pass on skills and experience to those who need it.
- Free childcare whilst training.
- Expenses paid for on-going training and support



When surveyed the main reason that our volunteers gave for leaving Home-Start was to access new or increased employment.

For more details please contact us at:

HOME-START SHEFFIELD
86 Upper Hanover Street, Sheffield S3 7RQ
Tel: (0114) 278 8377

DON'T DELAY!!

New preparation course
Starting September, 10am-2pm each Monday



Board Members Wanted



SYAC Ltd (South Yorkshire African Caribbean Business and Enterprise Training Centre) are looking for 10 new Board members, four of whom we will also wish to consider as candidates for the positions of the Chair, Vice Chair, Company Secretary and Treasurer. The positions are voluntary but expenses are paid. The Board meets monthly.

The aim of the Centre is to combat the problem of high unemployment faced by the African Caribbean community in Sheffield, to encourage and provide help to those wishing to start their own business and provide a range of employment training opportunities.

Applications to become a SYAC Board member are invited from suitably qualified people with a commitment to improving SYAC Ltd.

Applications from women and young people will be particularly welcome.

For an application pack, which includes further details, please contact:

Bernadette Grocock on (0114) 223 2100

Closing Date: 30th August 2004

Community Re>Paint Co-ordinator wanted

SCRAP Ltd is looking for a part-time Paint Co-ordinator to start in September.

This is currently a two day per week post based at 40 Earsham Street, S4.

The applicant should have:
a clean driving licence, be computer literate and able to lift large tins of paint.

Hourly rate: £8 (under review)

For full details contact Saleema or John on 275 5599

Application deadline: 6th August
Interviews: 12th August

Ellesmere Out Of School Project

Vacancy for Co-ordinator/Development Worker (35 hrs pw)
Salary £16,000+
(funded to July 05 with the possibility of re-funding)

Applicant will need to have NVQ 3 or above and:

- be committed to giving children the best possible play opportunities
- have experience of planning and developing the play of children
- be able to motivate themselves and the team as a whole.

The work will include planning/developing and running Holiday Playcare provision with Burngreave Out Of School Club.

For more information and an application form, please call 261 7518.

Closing date for applications: August 24th

Amanda Wells • Massage Therapist

Aromatherapy, Reflexology, Holistic, Lymphatic Drainage (detox), Indian Head and Swedish Massages
Also Relaxation sessions, Visualisations, Meditations and Diet & Nutrition Advice.

Phone: 0114 273 0976
Mobile: 0779 110 6885
Email: stressolutions@aol.com



10% off
OAPs,
students &
unwaged

Massage can:
Improve circulation
Reduce joint stiffness
Reduce muscle tension
Ease headaches
Improve PMS
Aid insomnia and
Help you relax

Amanda J Wells BA (Hons), ITEC, IGPP

Pitsmoor Credit Union

Your Local Savings and Loans Co-operative – Join Now!

For more information, phone 273 8555 or come to a Collection Point

Tuesdays & Thursdays 10.00am-4.00pm
at Recycling Matters, Spital Hill

Tuesdays 8.00-9.00pm
at The Rock Public House, Rock Street

Thursdays 11.00-12.00am
at the Welcome Centre (Christchurch Community Hall)

Pitsmoor Credit Union is regulated by the Financial Services Authority. Reg No: 213562

Can't use a needle and thread? Need that little sewing job done? Alterations, curtains or is that special occasion coming up? Fancy dress. Give Val a call on: (0114) 243 1199

Burngreave Green Environment Programme Events



**Tuesday 3rd August –
Follow the Footprint Trail**

11.00am-2.00pm at Pitsmoor
Adventure Playground

Crack the code of animal tracks and collect a reward from the Burngreave Rangers. Bring a packed lunch.

Thursday August 5th – Art Activities

1.30-3.30pm in Osgathorpe Park

Try your hand at a range of art & craft activities with the Burngreave Rangers

Tuesday August 24th – Fun Day in Ellesmere Park

1.30-3.30pm in Ellesmere Park

An afternoon of games & crafts in the Park. Come & join in the fun!

Transport provided, all you have to bring is waterproofs, stout footwear and a packed lunch. Everyone welcome, but an adult **must** accompany children under 8.



3DOM URBAN FESTIVAL

SATURDAY 31ST JULY 1PM - 9PM
DON VALLEY GRASS BOWL SHEFFIELD

LIVE ON STAGE <

BIG BROVAZ
FYA > SMUJI > TAZ
CHRIS GOLDFINGA
KILLA KELA > SKINNY MAN
SUN CYCLE > MAGNET MAN > TUBBY T

BREAKDANCING / CUSTOM CARS / FUN FAIR
SPRAYCAN ART / MARTIAL ARTS

★ **The Star**

EXCLUSIVE SPECIAL OFFER!

UP TO 50% DISCOUNT
ON ALL 3DOM FESTIVAL TICKETS
CHECK OUT LIMITED EDITION FLYER!

WWW.3DOMFESTIVAL.COM



Dear Messenger

A word of thanks to Burngreave and Fir Vale Sure Start for their excellent services and great success. As a father in the Fir Vale area, I would like to thank the Sure Start programme manager and staff for their initiative and hard work.

One of Sure Start's wonderful achievements was setting up the "parent together meetings", where parents in Burngreave and Fir Vale meet monthly to discuss and exchange their views, and have their say on issues concerning parents and their children, such as healthcare, childcare, healthy food, child education, learning difficulties, child minders and nurseries. It is a good opportunity for all parents to meet each other and develop friendships.

I would also like to congratulate them for their well organised and wonderful achievements. A day event was held at Sure Start, Abbeyfield House Office, on 24th June for all parents contributing to the programme to recognise their contributions, which really counts for SureStart's brilliant image.

Salah Maddi (Parent)

Dear Messenger

Regarding the letter condemning the prevalence of the flag of St George during the European football championship, I see no harm in supporting our football team. Indeed, I have a St George and Union Flag permanently on my car. Not only because I support our football team, but because I feel privileged to live in a country where I can worship my God without fear of persecution; where I can belong to a political party and express my political views without fear of arrest; where I have never felt the pangs of starvation; where my health is cared for and where I have been taught to read and write. These are just a few of the privileges I enjoy and, clearly, many other people from all over the world recognise them because they wish to come and live here. Our flag is not a sign of petty triumphalism. It is a celebration of our freedom, shared by millions.

Yours faithfully, Janet Stracey

Dear Messenger

Just thought I had to reply to the letter from Phil Hutchinson last issue about the craze for displaying the flag of St George. I mean, "narrow-minded nationalism and retrogressive petty triumphalism". The thing is Phil I think you've been so busy reading your dictionary that you didn't realise there was a football tournament taking place (Euro 2004). If you stopped 99.9% of the people sporting these flags, you'd probably find that's all it's about. Stop looking for sub-conscious racism that doesn't exist and realise that someone waving the flag of their country doesn't mean there's a hidden agenda. I've just come back from

Jamaica, where you see the national flag flown with pride everywhere you go. Does that make them narrow-minded nationalists? I certainly don't think so. So why is it different in England?

Simon Lewis

Dear Messenger

I was reading the piece on kids with anti-social behaviour problems. Are they just bullies and hoodlums, nasty for the sake of it because they want to be bad kids?

I get on the 75 or 76 bus every day from Firth Park, when the kids have come out of the school. When the bus stops to let people on, they push in and get on without showing their pass or paying. When the driver tells them to get off or won't let anymore on, they get abusive and violent. They bang on the glass where the driver is sitting. He closes the doors and they just open them from the outside and try to get on. People on the bus look scared and some even get off because of the ignorant little brats. It's not fair on the driver or the people on the bus. They have CCTV cameras, so why don't they go through them to catch them? Take action by going to the schools, getting their names and addresses. Write to their parents, get them in school or court, show them the videos. Then take their bus pass off them, ban them off all buses and give them a big fine. Or bring back school buses.

With two people on the bus, the driver and someone to keep an eye on the kids, it will save all the aggro on public buses.

It's not fair on the public or the bus drivers. Someone is going to get seriously hurt. Then what will happen? I dread to think.

Miss Amanda Jayne Whitefield, Firth Park

Dear Messenger

I have lived in Shirecliffe for 47 years and since Burngreave New Deal was formed I have attended meetings on a regular basis.

I have two questions I would like to ask:

- 1 Is it correct that as of June 2004 the Burngreave ward was extended to include Shirecliffe?
- 2 If this is correct what benefits and support will the residents of Shirecliffe receive from New Deal?

I look forward to hearing your reply.

Yours faithfully, Mr H Gordon, Batworth Drive

Ed – Mr Gordon is correct. In June the Burngreave Ward was expanded and now includes more of Shirecliffe and Firvale. Burngreave New Deal is a ten year regeneration programme, targeted at part of the old Burngreave Ward, which doesn't include Shirecliffe. This hasn't changed.

Danger on Ellesmere Road

There have been a number of traffic accidents and thefts from both vehicles and people in and around Ellesmere Children's Centre on Ellesmere Road. This is a long stretch of road that runs from Petre Street down to Ellesmere Green roundabout.

Sharon Curtis, manager of Ellesmere Children's Centre, expressed major concerns not only about petty theft from vehicles but also parking and double parking outside the centre itself. Due to the narrowness of that part of the road there has been major congestion and accidents involving speeding vehicles.

"Recently a pregnant lady visiting the centre had her parked car smashed into by a speeding motorist. Luckily she was inside the centre at the time."

Parents have signed a petition calling for road safety measures to be increased outside the centre. Parents have recommended speed bumps as well as widening that stretch of Ellesmere Road. "Members of the New Deal Police team said speed bumps would be too expensive," claimed Sharon.

The petition has been sent to the council and other relevant officials. "Through the petition we are pushing to have this issue resolved for us. The safety of parents and children attending this centre is a priority," added Sharon. "I've also asked for both parents and users of this centre to park on nearby Maxwell or Bressingham Road. Hopefully this will help alleviate some of the congestion."

by Rob Smith

Allotments targeted

Grimesthorpe allotments were targeted by thieves and vandals over two nights in July, just weeks after the launch of the Greenfingers project, see page 13. The shed of the New Deal funded project was broken into and equipment, including waterproofs for the project participants, were taken.



Other allotments holders also suffered with about 20 sheds broken into and the contents strewn about, although many report that tools were not taken. The Allotment Society's hut was damaged and the windows to the toilets, bought last year with New Deal money, were broken.

At a meeting plot holders expressed their frustration at the damage after years of hard work to make the allotments more secure and better used. Some gardeners felt this incident was not an isolated one as Roe Wood's allotments had around 40 sheds attacked in one night just weeks before. The meeting wanted the police to do more and called for all allotmenters to contact the police about any break-ins on 220 2020 and request a incident number.

A Crime Reduction Officer, who also attended, described how sheds could be fortified. One of his more useful suggestions was to mark tools with permanent UV pens so that thieves would find it more difficult to resell them at car boot sales.

Despite the difficulties Grimesthorpe gardeners enjoyed a barbeque after the meeting and discussed plans to make the main gate more secure. Some people were concerned that this incident might deter people from taking up allotments – some felt that a well-used allotment site was the best defence against vandalism.

Rob Bullock of Grimesthorpe Community Gardens Committee said, "We mustn't forget that we've achieved a great deal in the last two years and made real progress. It is undermined by this kind of mindless destruction, but we will persevere."

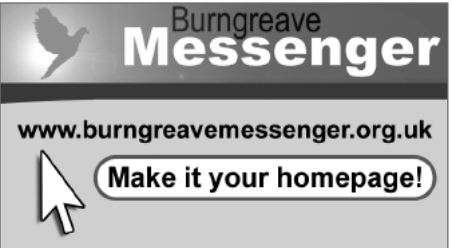
by Lisa Swift

The Editorial

Over the last year our website has become the place to go to find out what's happening in Burngreave. It has contained more than the printed issue, with extra jobs, notices, photos and articles. There've been useful links and downloadable documents that give power to the elbow of local people. It has also shown the world what a fantastic place Burngreave is to live in.

Our web designer is now working on the development of the New Deal website, which will be many months in the making. Although the *Messenger* site will no longer be updated, downloadable PDF versions of the printed newspaper will still be available and we will continue to put extra jobs online.

If you have a job to advertise online please get in touch, it's free!



The Burngreave Messenger is a community newspaper, funded by New Deal, with editorial independence. We aim to increase and encourage communication in Burngreave.

Each edition is put together by an editorial team who write articles not otherwise credited. We hold meetings on Wednesdays at 6.30pm at Abbeyfield Park House. The next editorial meeting is 4th August and the next management meeting is 25th August. All are welcome. **The next copy deadline is 11th August.**

This month's issue was produced by the Editorial team: Farzana Ahmed, Kate Atkinson, Annie Blindell, Clare Burnell, Patrick Edwards, Mark Lankshear, Jamie Marriott, Carl Rose, Rob Smith, Lisa Swift and Paul Taylor.

All Messenger content is copyright Burngreave Messenger Ltd or its voluntary contributors and should not be reproduced without permission.

Contact the Messenger

**Abbeyfield Park House,
Abbeyfield Road, S4 7AT
Tel: 242 0564
messenger@burngreave.net**

‘Safe and quiet?’

Our article ‘Streets of Burngreave - safe and quiet’ last month provoked a number of comments from young people, worried we were portraying them in a bad light, and from residents, upset by young people’s behaviour and the difficulty they had in getting the police to respond (see below).

Readers respond

The photograph we used on page 4 last month was intended to show young people hanging about, we didn’t intend to identify any individuals or to imply that they were part of a gang, but some of the young people were worried that they could be recognised. Our thanks to Omer Mohammed, a Connexions Youth Worker, who helped us to talk to some of them. They said;

“You can still recognise people in that photograph. It’s not fair for them to be linked to talk about gangs. It makes people think we’re all in gangs and it’s not like that. If people feel intimidated by us, that can only make things worse.”

Omer talked to them about all the things on offer in the area for young people, but many of them wanted to be in the park.

“There’s nothing to do here. A shelter would be good, but why can’t we use that building at the back?”

Plans are already being made to improve the facilities in Abbeyfield Park see page 10, while Green City Action are continuing to seek funding to bring the stables building back into use.

Lack of Police response

We also received a complaint from an Earl Marshall resident about the comment “There was gangs of youths here everyday before. But now the police have clamped down and moved them on.” The resident told the *Messenger* that the police had been called on many occasions because of blatant drug dealing but they did nothing to tackle this. The resident explained that the young people only moved on because of the shooting.

Other residents have also complained that the police do not respond effectively. A recent environment meeting heard complaints that getting through to police in the first place was difficult. The *Messenger* has learnt the New Deal Police number is only ever answered by a machine. Residents complained that messages were left but no one returned their calls.

Get your number

A call was made for all residents to make sure they got incident numbers when reporting a crime. That way the complaint is recorded properly, you can follow it up if nothing is done, and if there is still no response, complaints can be made to the police.

The *Messenger* attempted to get a response to these concerns, and left messages for the New Deal Police Team, but no one responded.

To contact South Yorkshire Police phone 220 2020 or to contact the New Deal Police Team phone 296 4381. In an emergency phone 999.

Council plan transformation...

Proposals for the Burngreave and Fir Vale Masterplan have been unveiled by the Council. Nothing is finalised, but all the options include plans for extensive rebuilding of key local areas. Combined with the new ring road and New Deal plans for green spaces, Sorby House and the Vestry Hall, the scene is being set for redevelopment throughout our area, and for the long-awaited transformation of Spital Hill.

What’s the Masterplan?

The Masterplan is part of the Government’s housing renewal programme, aimed at regenerating failing housing markets. Transform South Yorkshire has £70 million to invest in areas of Sheffield, Rotherham, Doncaster and Barnsley over three years. The idea is the ‘masterplan’ will be a framework for spending the housing renewal money and will also encourage and direct other private and public investment.

The Masterplan is being drawn up by consultants LDA Urban Design. They held a series of exhibitions in May and have displayed the proposals at recent community events where they have been provoking lively debate.

LDA will produce a ‘preferred plan’ which we will be able to comment on in September before it goes to the Council for approval. For more information about the Masterplan contact Burngreave Area Action Team on 276 9134.

...but permission for sign refused

Local restraunteur Bsharath ‘Paul’ Hussain couldn’t believe it when plans for a new sign for his landmark restaurant, The Kashmir, were rejected. The Local Planning Authority said it would be “detrimental to the visual amenities of the locality” and “would detract from the special architectural and historic interest of the Spital Hill Works”.

Bsharath, who has been serving sublime curries here since the mid 70s, said “Never in my wildest dreams did I think they would refuse permission. I’m right miffed.” A petition against the decision quickly attracted 200 signatures and the designers reduced the sign’s size as they prepared for an appeal. Then Bsharath saw his premises was due to be demolished in all three options in the Spital Hill Masterplan.

“Now I’m unsure how to proceed due to a lack of information. If your business is due for demolition it changes your whole life. We should have been informed in writing, not left to come across it at a roadshow.”

Burngreave Sports Development Project

Job Title
Trainee sports and physical activity area workers

Please note
These posts are only available to Burngreave New Deal for Communities (BNDfC) residents

Post ref: DEL 181 LP

Grade/Salary
Fixed salary SCP 1 – £11,949 (pay award pending), 37 Hours (Temporary 2 year contract)

Directorate
Development, Environment & Leisure

Location
Verdon Recreation Centre, Verdon Street, Sheffield S3

We are looking for two new trainee sports and physical activity area workers to form part of the Burngreave sports development team. This is an exciting opportunity for two people living in the BNDFC area. The trainees will be required to attend a programme of training, which may include coaching and college courses supported with on the job training. Enabling the successful applicants to develop the skills, qualifications and experience to become competent area workers by the end of the two-year training programme.

While we welcome those with sports/physical activity experience, we are particularly looking for applicants who have a personal commitment to developing sport and physical activity within Burngreave and who can demonstrate the following personal qualities:

- A commitment to personal development
- A desire for a successful career within the sports and leisure industry
- Enthusiasm and motivation
- Be a role model within the local community
- Ability to work as part of a team
- Flexible approach to working to meet community needs

The Burngreave sports project has been successfully running for over a year and has just secured a further three years funding. It is currently running a full programme of sports/physical activity sessions within the area and is working hard to develop the capacity of local residents to enable them to provide their own sporting activities. Sport already plays an important part in the lives of many Burngreave residents and has a vital role in Burngreave’s regeneration.

We particularly welcome applications from female residents

For an application form
Contact Leisure Personnel on (0114) 273 5975

Informal Enquires
Contact Sarah Nickson – Team Manager on (0114) 273 6314

Closing Date: 12 Aug 2004
Interview Date: 31 Aug 2004

Please note that this post provides substantial access to children. All successful applicant’s criminal conviction record with the police will be checked.



Burngreave New Deal for Communities



JOB VACANCY

Information Officers (x2)
37 hours per week
Salary range £13,562–15,930

We need two Information Officers working on a rota basis to manage our Information Shop on Spital Hill. Duties will include the day to day running of the shop, dealing with enquiries from local residents, managing staff and other duties. If you have:

- experience of working in a shop or customer service environment
- excellent communication skills both in person and on the telephone
- If you can work as part of a team as well as being able work with minimum supervision

We would like to hear from you.

Applications from residents of the Burngreave area are particularly welcome for these posts.

For further information and an application pack please contact Roy Sinclair at BNDfC on (0114) 279 6937.

Closing date for applications:
4.00pm, Monday 16 August 2004

Burngreave Community Action Trust

2 Part-time Community-Based Sports Development Officers

18.5 hours per week, up to £16,000 per annum (pro-rata) (Fixed Term until May 2007)

To Capacity Build the Burngreave Sports Network and assist them with delivering sporting events and a consultation event.

The successful applicants will have:

- Knowledge of funding regimes, partnership working and development planning
- The ability to facilitate meetings
- Good organisation skill
- The ability to work with a range of people from a variety of backgrounds and sensitive to multicultural issues.

Knowledge of community sports development is desirable but more important is the ability of the successful applicant to grow the Sports Network in to a strong community group representative of Burngreave.

One of the posts is subject to Section 7(2)(e) of the Sex Discrimination Act 1975. This is specifically to develop Sports and Recreation initiatives for Women.

For an informal discussion, please contact Patrick Edwards on 250 2717.

For an application pack and Job Description, please contact: Kate Thompson on 272 8008, Burngreave Community Action Trust Ltd, 12 Burngreave Road, S3 9DD.

Closing date: 12 noon, 20th August
Interviews: 1st September



Calling all carers

I work for the Sheffield Carers Centre and my job is to identify and support the many thousands of hidden carers living north of the city centre.

Are you a carer?

If you look after someone who has a long-term health problem or disability and you offer regular and substantial support, by Government definition, you are a Carer. 'Regular' means twenty hours or more per week. 'Long-term

health problem' means an illness like arthritis, asthma, autism, Asperger's, Alzheimer's, diabetes, cancer, dementia or mental health problems – the list is endless.

The kind of support you give will be things like helping to dress someone, doing the shopping, handling the money, getting them up and down stairs, trying to keep them cheerful, and a million other tasks besides!

You might be a parent whose child has a learning or physical disability and you struggle to cope with temper

tantrums, getting the right support at school, or being able to give your other kids the attention you would like.

If these situations apply to you (and there are many more), you are not only a wife or husband, mom or dad, brother or sister, relative or friend, you are a Carer, and legally entitled to help.

If you think you are carer and need help please contact me at the Carers Centre on 278 8942.

by John Lawson



The Princess Royal Trust
for Carers



contact: 276 9134

Burngreave Area Panel

The Members of the Burngreave Area Panel

There has been a slight change to the members of the Burngreave Area Panel as a result of the local elections in June and the changes that happened to the ward boundaries at the same time. This means there are now only three members on the Panel.



Cllr Jackie Drayton



Cllr Ibrar Hussain



Cllr Steve Jones

The panel is still chaired by Cllr Jackie Drayton. The Panel would like to thank Cllr Allan Law, as he joins Brightside Area Panel, for all his hard work representing the people of the Burngreave.

For your diary... Area Panel public meetings

Following the elections we have now set the dates for our public meetings for the coming year. The meetings are on the last **Thursday** of the month from **6.30–8.30pm** at venues around the area. Look out for further details in each month's *Messenger*. There are no public meetings in August or December. Dates for the coming year are:

30th September, 28th October and 25th November 2004

27th January 2005

Burngreave New Year's Honours Awards

**24th February, 31st March, 28th April,
25th May and 30th June 2005**

Burngreave the safest place in Sheffield

Jewelry worth over half a million pounds walked through Burngreave on Sunday 27th June in safety as the Lord Mayor and Lady Mayoress of Sheffield, Councillor Michael and Mrs Josephine Pye completed the Burngreave mile run. The Panel would like to thank every one involved in organizing the event.



© Carl Rose

We were there, were you?

Once again the Abbeyfield Park Multicultural Festival was a great success. The Area Panel was there to join in the festivities and take the opportunity to hear your views on all that is happening in Burngreave. We also brought with us a team of face painters to help make sure the park was full of smiling faces!

We would like to thank Green City Action for organizing the event and everyone else who got involved for helping to make it such a success.

The festival is one of four events each year to be organized in this area by Green City Action as part of the Burngreave Events Project funded through the Area Panel and Burngreave New Deal for Communities. The next event will be a celebration of the Wensley Estate on 8th September. There will then be a winter festival of light in November.

Look out for more details on this page near the time.



Produced by Kieron Williams – Area Co-ordinator for the Burngreave Area Panel

Catherine Street

Catherine Street has derelict properties and the open space is severely neglected. The Masterplan shows renovation of the Somerset Road basketball court, new terraced housing on Catherine Street and Cranworth Road and the closure of Brotherton Street to cars. There is an option for additional new terraced housing on Somerset Road, Richmond Street and Kilton Hill.

Woodside

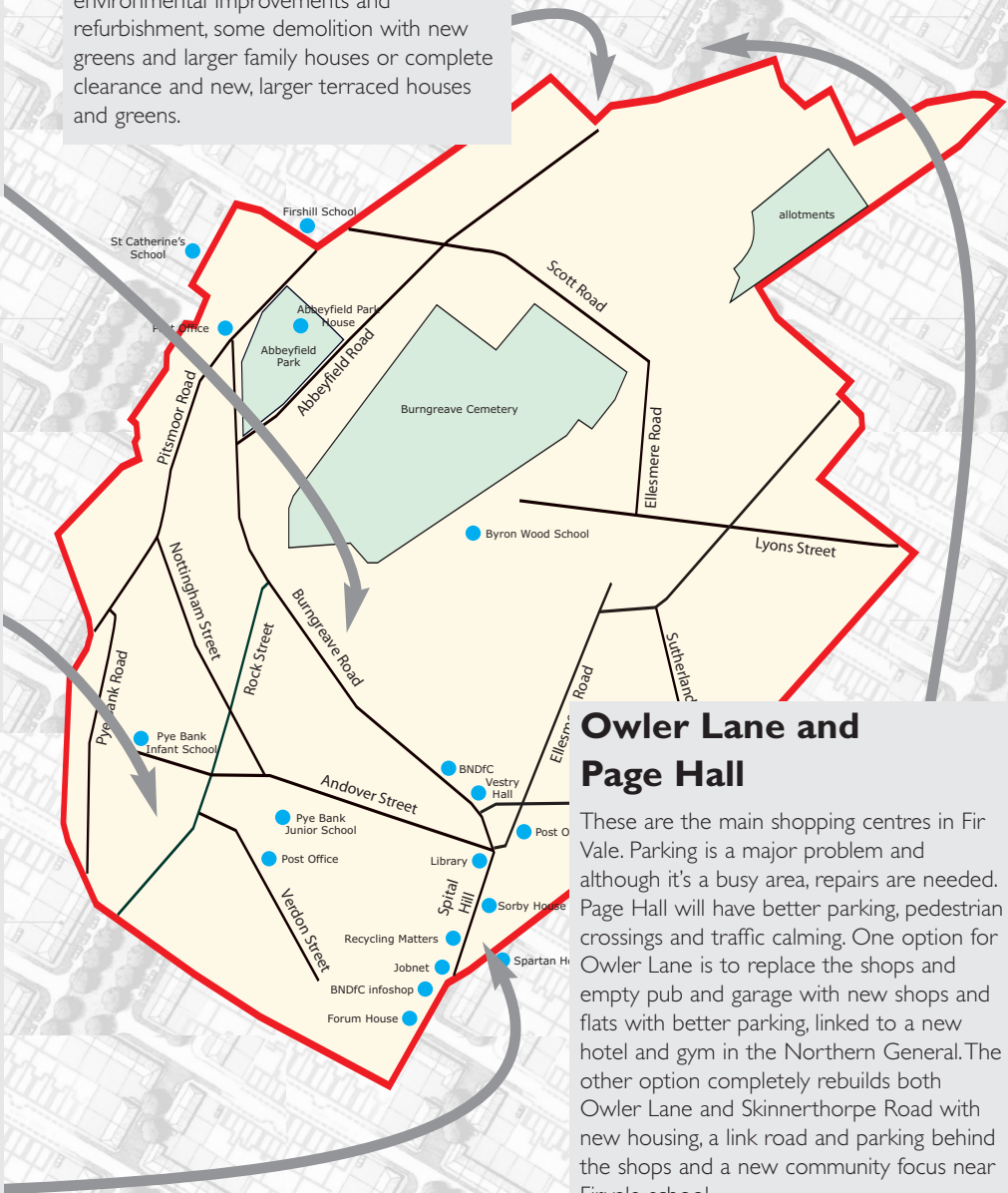
Five hectares of land are being cleared on the old Woodside estate, alongside the 5.5 hectares of open space off Pitsmoor Road. All options for this area include improvements to the open space, new workshops along Woodside Lane and the conversion of Pye Bank school to high quality flats with shops and services opposite. The options contain varying mixes of new housing: flats, family housing or a 'hillside village'.

Spital Hill

All the proposals show the new ring road crossing Spital Hill above the Wicker Arches, with new offices, shops and restaurants built up the left of Spital Hill, the refurbishment of Ellesmere Green and paving of part of Ellesmere Road. Options include more offices, shops and flats up both sides of Spital Hill, a business park next to the ring road, a market on the site of the derelict garage and a foodstore with parking between Spital Hill and Sorby Street.

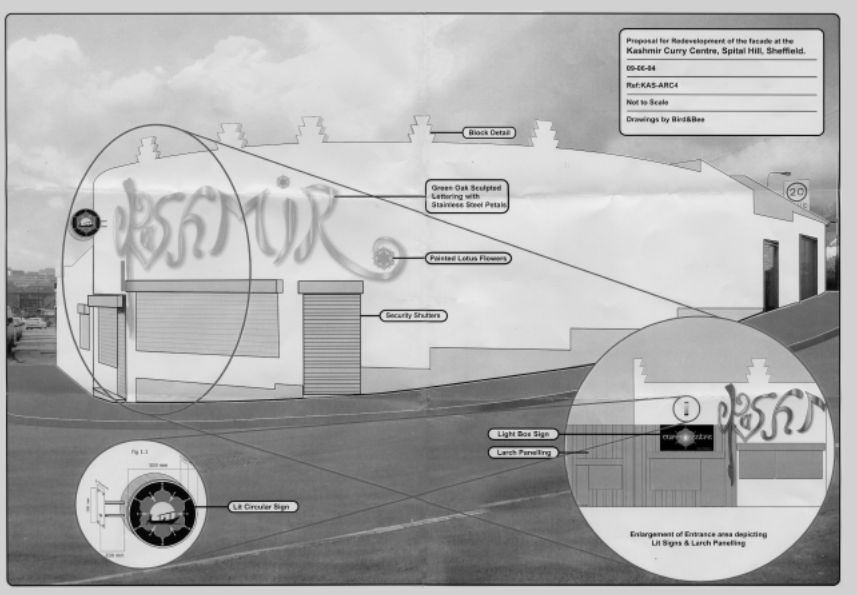
Fir Vale

37% of housing in Fir Vale is unfit or in poor repair and many terraced houses are too small. The Masterplan shows three options; environmental improvements and refurbishment, some demolition with new greens and larger family houses or complete clearance and new, larger terraced houses and greens.



Owler Lane and Page Hall

These are the main shopping centres in Fir Vale. Parking is a major problem and although it's a busy area, repairs are needed. Page Hall will have better parking, pedestrian crossings and traffic calming. One option for Owler Lane is to replace the shops and empty pub and garage with new shops and flats with better parking, linked to a new hotel and gym in the Northern General. The other option completely rebuilds both Owler Lane and Skinnerthorpe Road with new housing, a link road and parking behind the shops and a new community focus near Firvale school.



Handspring Design, who also designed the 'Recycling Matters' shop front opposite the Kashmir, said the planned sign "provided a beautiful sculptured artwork flowing around the building".

Spital Hill has long been plagued by dereliction and lack of investment. Transforming it into a thriving multicultural hub for the whole city has always been at the top of the community's agenda. Now the Council are making plans for major redevelopment. All the options include extensive demolition, with all the disruption that causes, but they won't allow a local businessman to put up a new sign.

Shops & Businesses

Nellie's Sandwich Shop

40 Ellesmere Road
Burngreave
Tel 279 7080

This sandwich shop has been open and serving our community for well over eight years and Nellie Ramsey explains that she's been living here all her life. "This is my community Rob, and I wouldn't want to live anywhere else." I asked what sort of meals Nellie sells most, and she informed me that chicken sandwiches as well as liver and onion, are amongst the establishment's favourites.

"Liver is good for your blood, we also prepare proper beef steak and all halal meat," adds long-time associate and business partner Nadia.

I asked Nellie what she felt about the service she provides, "When my customers enjoy my food, this of course makes me happy." I enquired whether this was a competitive business and Nellie said that with other shops around it was, but felt she got her fair share of business. "Some people have their business to get rich, but I just want to make a decent living."

I asked if they felt any sense of community where they worked and resided – both admitted they did. I then enquired whether they believed New Deal had achieved anything positive for them. "Yeah" said Nellie, "But maybe we're all not making the best use of it."

For Jamaican fruit punches, juices, patties, soft drinks as well as freshly cooked and prepared hot and cold food, it's happening at Nellie's Sandwich Shop. Nellie is also open to take food orders for community-led functions and events as well as daily food orders. So for any further information please contact the number provided above.



© Carl Rose

Tawakal Shop

28 Ellesmere Rd S4 7JB
Tel 272 2002

Tawakal opened just over a year ago and caters for wedding dresses for all sizes, races, nations and religious backgrounds. It is trusted for home furnishings, wedding dress hire and sales. It is an international call centre, with a fax service and all phone cards are available. On sale are: lamps, shoes, slippers, curtains, perfumes, creams, essence, watches, jewellery and all Islamic clothing for men and women.

"We also do the latest sofa chairs, wall charts and an array of rug carpets at affordable prices," explained proprietor Mr Rashid Yusaf.

"As well as selling international phone cards we have four booths that allow people privacy when making phone calls all over the world," explained the shop assistant Mohamed who was more than happy to pose for his photograph.

Tawakal is open from 9.00am till 9.00pm seven days a week and for any enquiries on dressing for that memorable occasion look no further.

by Rob Smith



A New Deal for Burngreave

The new Burngreave buses

Two new bus services linking Burngreave to Meadowhall, the Sheffield Airport Business Park and the new manufacturing park in Waverley are set to be on the road from Monday 26 July.

The Burngreave Circular Bus Project is being run by Sheffield Community Transport. South Yorkshire Passenger Transport Executive (SYPTX) has designed the service and provided funding along with BNDfC, Objective 1 and Sheffield City Council. A steering group which includes local residents will monitor the project.

Services B1 and B2, Burngreave Link, are a local access circular service. They provide a direct link into the Northern General Hospital, local access along roads not currently serviced by mainstream bus services, access to leisure opportunities along Attercliffe Common, training at The Source and work/retail opportunities at Meadowhall. These will run hourly in



each direction from about 7am–7pm, Monday to Saturday.

D1, Job Link, will provide direct access between Burngreave, Sheffield Airport Business Park and the Waverley Manufacturing Park. They will run half hourly in each direction from about 7am–7pm, Monday to Saturday.

Flat fares of either 50p or 75p will apply and £1 transfer fares will be available for customers wanting to transfer between B1/B2 and D1 services. Concessionary fares and Travelmasters are valid on these services.

The project has included training and job opportunities for local people. Two residents have obtained PSV licenses and will drive the buses used on these services. For more information on these bus services please contact Sheffield Community Transport on 276 6148.

Beautiful Burngreave showcases talent

Burngreave is being given the chance to shine after funding was secured for 'The Festivals Project', which will deliver four major community events in the area.

© Richard Hanson

Burngreave New Deal for Communities (BNDfC) and the Burngreave Area Panel are providing £30,000 to Green City Action to deliver the four events – the first and largest being the fantastic Abbeyfield Multicultural Festival that took place earlier in July. This is to be followed by an autumn event on the Wensley Estate on 8 September, a winter 'Festival of Lights' in mid-November and a theatre performance in Spring next year in another green space within Burngreave.



News in Brief

Time to pick up your pocket calendar...

It may be nearly half way through the year already but we want to make sure you don't forget to pick up your BNDfC pocket calendars.

Available from the Information Shop at 131 Spital Hill, not only will they help you keep track of the days and months of 2004, they also give you BNDfC contact details and helpful reminders as to when the Theme Group Meetings are held.

You can also put a face to the name and find out exactly who makes up the BNDfC Partnership Board.

Family fun in Skegness

Calling all BNDfC residents and their children – it's time to get the bucket and spade at the ready!

For a family fun day to Skegness has been organised by BNDfC on Saturday 31 July.

Tickets cost £2 per adult and 50p per child and are available from BNDfC, 12–14 Burngreave Road, Monday to Friday, 2–5pm. Ticket price includes juice and snacks but not lunch.

Burngreave Going Live

Burngreave is getting ready to hit the airwaves with the launch of Burngreave Community Radio (BCR) in August.

BNDfC are supporting a one-month trial of BCR but it is hoped that this will lead to a permanent FM station for Burngreave.

Look out for more details on the launch of BCR or if you want to find out how you can get involved in DJing, radio production, interviewing, sound editing, jingle making, programme preparation and presenting ring Aisha Special K on 285 9935.

BURNGREAVE BUILDING Co.

New Deal Contracts Undertaken

33 Melrose Road, Burngreave, Sheffield S3 9DN
email: burngreavebuilding@hotmail.com
www.burngreavebuilding.co.uk

FREE ESTIMATES ~ FREEPHONE:
0800 083 0669

0114 275 1281
Mob: 07977 96 41 42

BUILDING GUARANTEE SCHEME

SIGNPOST GARAGE

Class 4, 5 & 7 MOTs

Up to 16-Seater Minibuses Tested

Auto Electrics, Petrol & Diesel Engine Management
ABS, Air Bags, Air Conditioning Service, Key Coding

General Electronic Control Module Diagnostics
Smart Diagnostics for Peak Performance

Proprietor: Javed MIRTE, MSOE, MIMI, CAE, LCGI

Tel: (0114) 272 9216
www.signpostgarage.co.uk

8a Kilton Hill, Sheffield S3 9EB

News in Brief

Economic Strategy

Thanks to the involvement of people who attend the Employment and Enterprise Theme Group Meetings, a Local Economic Development Strategy is expected to be ready in September.

The strategy, suggested by the community through the theme meetings, will tackle the issue of unemployment in Burngreave. It will provide a definite purpose with targets that need to be reached ensuring visible actions such as training people into jobs and attracting other major agencies to get involved. It will act as a framework for project development, management and engagement of key stakeholders.

Domestic abuse help

Burngreave Domestic Abuse Project is a community-based service offering support to women who are experiencing or have experienced domestic abuse.

Funded by BNDfC, it provides provision for emotional and practical support, accompanied visits and home visits. Drop-in sessions are also run on Thursday's at Ivy Lodge Clinic between 2-3.30pm and on Friday's at Corner Stone Building on Burngreave Road between 11am-12noon. Call 228 8136 for more information.

Theme Meetings

To find out more about an issue that concerns you come to one of the following meetings:

Health: 2 August, St Peter's, 5.30-7.30pm

Employment & Enterprise: 4 August, Ellesmere Children's Centre, 1.30-3.30pm

Education: 4 August, St Peter's Church Hall, Lyons Street, 6-8pm
(Subject to change - please call 292 2908 to confirm)

Over-arching: 10 August, The Furnival, Verdon Street, 6-8pm

Housing: 12 August, BCAT meeting room, 6-8pm

Crime: 17 August, Pitsmoor Methodist Church, 6-8pm

Environment: 26 August, Pitsmoor Methodist Church, 6-8pm

Supporting local business



© Carl Rose

Local businessman Mr Hussein outside his properties on Ellesmere Road that have benefited from the BNDfC Grants Scheme.

A lot of hard work has been going on behind the scenes by BNDfC to support the development of local businesses in the area.

Through the Supporting Business project, Saghir Ahmed, the Business and Enterprise Champion, works with residents and companies to assist in the development of new business start-ups and the expansion of existing

businesses respectively.

Fifty five security grants have been given out increasing the security of premises and equipment and improving the look of the shopping area around Spital Hill.

This project has also succeeded in reviving the Burngreave Business Forum. Watch this space for a big event planned by the Forum in November.

Building a better Burngreave

A number of other BNDfC Employment and Enterprise projects are up and running - all increasing the training opportunities available to Burngreave residents, giving people a chance to develop their employability skills and opening up possible job opportunities.

Jobnet - a jobsearch, advice and guidance service helping local people into employment.

Yemeni Refugee Organisation - targeted support that assists refugees and asylum seekers to secure voluntary/paid work and other employment related opportunities.

BNDfC NETT - provides local residents with low/no cost driving lessons to increase their ability to get and stay in work.

MAMA - Training for Business and Employment - an initiative run by a

Somali women's group to help women of Somali background to learn about business and employment issues.

Burngreave Language Support Agency - a social enterprise helping local residents to become multilingual interpreters and translators.

BNDfC Intermediate Labour Market - offers local people an opportunity to gain work experience and employability skills.

BNDfC Construction Initiative - encourages local residents to acquire skills and pursue career opportunities in the construction industry.

Pitsmoor Credit Union - provides affordable savings and loans to residents of Burngreave.

For further information on any of these initiatives please contact Trywell Kalyata at BNDfC on 292 2907.

Language Matters

Burngreave Language Support Agency (BLSA) organised a successful conference on 1st July at the Spectrum Centre.

There were two key note speakers, who talked about national and local issues, making people aware of the problems and aiming to break down language barriers.

The event was attended by almost 100 delegates representing various organisations, communities, and groups. Workshops included: Community language teaching, Health issues and interpreting and Translation and interpretation good practice. The



participants were also given the opportunity to discuss issues and give feedback.

If you missed it this time don't worry. Due to the demand and success of the conference it's expected that there will be regular BLSA conferences.

BLSA is now offering translation and interpreting services and will cover all your language needs.

We are open Monday to Friday, 9.00am-5.00pm. Or contact the team on 272 2833 or email: info@blsa.org.uk

by Mahmoud Brasab

Stranger Danger

On 1st July Pitsmoor Adventure playground joined with the New Deal Police Team to make the children more aware about the danger of meeting strangers.

"The idea is to bring a stranger onto the playground, who may attempt to befriend the kids. In this case it will be a plain-clothed officer," explained Richard Fowler of the Playground.

The arrival of four New Deal Police Officers was followed by the appearance of their stranger. The plain-clothed policeman wearing army jackboots, bright orange T-shirt and army trousers. I watched as he positioned himself outside the gates. He stood amidst the kids before entering the centre itself.

Inside PC Hancock asked if any of the kids knew what had happened recently to bring the Police out. "The shootings," shouted one young voice. Another suggested, "The fighting."

PC Hancock soon corrected them by enquiring if any one had been aware of a stranger and knew the danger of talking to strangers. "Yeah!" many of the kids acknowledged this danger as some made reference to the recent Ian Huntley case.

"Has anyone seen the stranger that had just been here?" PC Hancock's asked. The centre fell silent momentarily. "A man with army trousers was here, he was a stranger!" Declared one young voice joined by others.

Asking the kids for a description of the man meant pens and paper were handed out, before moving onto how to say no and evade the attentions and danger of strangers.

by Rob Smith

NEVER...

...go with a stranger

...get into a car with a stranger

...take things from a stranger

...go off on your own. Always play with other children.

...be afraid to say no - say no. Never go!

The Breakfast Club

8.15am, Monday 5th July and I'd been invited to Byron Wood School's breakfast club.

"This began in June," explains Joanne Cooke, one of the initiators of the club. "Jointly funded by New Deal and the LEA, it has been very popular from the beginning and we have around twenty kids here every morning."



Assisting Joanne Cooke, with the breakfast club are Nick Cassim, Mr Esam Abdulkader and Dina Makim.

The sound of all those children laughing and chatting drew my attention and seeing the array of breakfast food on offer I wasn't at all surprised. Cereal was at 10p a bowl, a slice of toast: 8p with jam, 5p without. Orange juice was 5p a cup, hot tea 10p, with yoghurt at 20p and cereal bars 25p. I also saw apples, bananas and oranges as I went around. Some parents stayed to enjoy the half hour of breakfast and table games.

A real appeal for sponsorship

"We are trying to see what effects this all has on classroom achievements," added Joanne, who is also appealing for local sponsorship. "We're keen to hear from local stores, shops and greengrocers in a bid to help sustain the club another year."

If you are a local shop, business or fresh fruit outlet and would like to help this initiative contact Joanne Cooke on 272 3624.

by Rob Smith

Going the extra mile

7:30am: With the sky clear blue, Green Line Road Traffic Management were here. All major road junctions from Abbeyfield Park to Petre Street playing fields coned, road closure signs in place.

8:30am: Community wardens, volunteer road stewards and race registrars were moving into place.

10:00am: The sun shine marked the arrival of the Lord and Lady Mayor alongside Cllr Jackie Drayton and Sports Minister Richard Caborn. The under 14s race began and saw over 40 children open the day's event by running the first mile, won by Mursel Mohad.

10:30am: A vocal crowd countdown saw the pram push sent on its way, joined by our city's new Lord Mayor and



Race for Life

Staff of Ellesmere Children's Centre raised £570 for Breast Cancer Research by completing the 5km 'Race for Life' on Sunday 9th May.

Over 5,000 women joined together in an aerobics pre-race warm up at Don



dignitaries who all walked the mile. This race was won by Khdiya and Mohammad.

11:00am: The teenagers set of for the third race, won by Abdirisak.

11:30am: John Clark, New Deal's Chief Executive and Donovan Modest of BCAF joined over fifty registered entrants for the main race of the day, open to all. It was won by Martin Thomas, with PCT boss Andy Buck coming second.

12:30am: Bouncy castles, music, presentations, games and food were enjoyed under a sun that shone on Petre Street playing fields. The presentation saw all the winners and runners up awarded medals. Junior football took place as Burngreave Sports Network, Burngreave United Under 7s & 8s and Earl Marshall Football team, played hosts to visiting teams and their parents from across the region.

by Rob Smith



Lord Mayor Leek opens health garden

The Greenfingers Horticultural Therapy garden opened with a flourish on June 17th. The Lord Mayor, Diane Leek, on her last day in office, was welcomed to cut the ribbon. She said she looked forward to seeing the garden planted and stocked with flowers and vegetables.



The garden has been created over a period of ten weeks from three disused allotments at the Grimesthorpe Community Gardens. Hundreds of tons of material were moved, fences and paths were put in, and a cabin, shed and greenhouse were erected on the site.

John Lawson, of the Greenfingers project, stressed that gardening can be extremely helpful in recovering from mental health problems and that the garden was an important contribution to local health care resources.

Rob Bullock, chair of the Community Gardens, emphasised the importance of the Project to the development of the Community Gardens as a whole, and he praised the co-operative spirit of the existing allotment holders during the building of the Greenfingers garden.

As people began to consume the tasty food, provided by Steps Drop In and Laila Wragg, and the smells of cooking wafted over the site, the good feeling was very evident. Rose Ardron, chair of the New Deal Partnership Board, was moved to read poetry and the afternoon finished with well-known Sheffield performer, Sally Goldsmith, singing her highly original gardening songs. It was a pleasure to be there.



For more information about Greenfingers contact 275 4584, or about allotments contact John Martin on 250 0500.

by Adrian Wynn

Young volunteers spruce up park

With the help of the Burngreave Park Rangers, members of the Prince's Trust Volunteers and the Friends of Osgathorpe Park the redevelopment of the Park has begun.

"We've painted the pavilion and playground and done a lot of scrub clearance Rob," explained Park Ranger, Jenny Crick.

Karl Bacon, of the Prince's Trust Volunteers based at the old Firth Park library, explained the work had been done as part of a course for young people from all over Sheffield.

The full-time, 12-week course aims to provide a wide range of skills and experience to young people aged 16-25. It includes a residential week, outdoor pursuits, careers development and work with different community groups.

I spoke to Nathan Dobson from the Manor, who said he'd been on the course for six weeks, "I've been abseiling, water rafting, and caving. I've really enjoyed it so far."

Kelly Taylor, aged 16, said she really enjoyed the project but



found the painting a bit boring. "I live in Pitsmoor," said Kelly "And I'm looking forward to the Osgathorpe Festival, we've all done a lot of work to tidy up the place."

Alex Hall, 17, explained how the project had helped occupy his day, "If we weren't doing this I guess we'd be getting up to mischief or watching telly."

Mathew Parker from Totley said it had turned out much better than he'd thought. "I did the residential and completed the health walk, but I didn't do abseiling because I'm scared of heights."

"The programme came about through the Burngreave Green Environment Programme which is developing green spaces in Burngreave," explained Rachel Kerr project development worker. "I'm very pleased with the work the Prince's Trust Volunteers have put in over the last two weeks."

For more information contact Burngreave Green Environment Programme on 278 9651.

by Rob Smith

Woods campaigner tired of being ignored

Peter Mappin has lived next to Little Roe Wood for 20 years. “Originally it was a lovely place, but in all my time here I’ve never seen such a state,” he told me. The 56-year-old has been battling with Sheffield City Council to get them to clear up the site for years but has seen barely any results.

Peter told me he is concerned about the damage that fly-tipping, prostitution and the council’s neglect of the woods are causing to the environment. “The wildlife is prolific, there are foxes, hedgehogs, badgers, all imaginable kinds of birds, apple and pear trees.” Peter has made endless phone calls, taken pictures of the rubbish and shown them to the council, and written letters but to no avail.

“I reported two sheets of asbestos that had been dumped once. It took me eleven phone calls and then it still took three weeks to be removed. Yet they closed St Catherine’s School when they found asbestos. But what do the kids do when they’re off school? Go and play in the woods near the asbestos sheets!”

He received a letter from Cllr Steve Jones, the Council Deputy Leader, which stated they were trying to obtain funding and get information about ownership of the land before any action could be taken. But Mr Mappin said: “I don’t believe it. They’re trying to pacify me.”

Peter told me about the attitude the council seem to have towards him. “They couldn’t care less. If we were in Totley they’d sort it out. But they think this is a derelict area.” From talking to Peter I think if it is a derelict area then it has only become so through the council neglecting it for so many years.

“Whenever I ring I can’t get through to the right department. They think ‘Oh it’s him again – put him through to anyone.’ They’ve put me through to all kinds of places – Social Services and even the people who do the street signs! And each time you have to explain all over again only for them to put you through to someone else.”

He suggested that they put a gate on the entrance to the woods to stop fly-tippers and prostitutes entering and polluting the environment. He spoke to a council official who according to Mr Mappin: “Was more concerned about costs”. To which Peter’s answer is: what’s it costing the environment?”

He told me how the area used to be known as ‘Seven Ponds’, with families of ducks and other pond life. “It was a popular spot, I used to hear children’s laughter ringing round the woods.” The Council dredged the last remaining pond, but



Tyres, flyers, car batteries and household waste have been dumped here and left, or only partially removed by the Council.

broke its basin – now it doesn’t hold water, and they logged trees leaving the branches to rot and fall into the shallow pool. Now all that remains is a muddy swamp, the paths are overgrown and the woods are almost deserted.

I asked why the woods are so important to Peter. “It’s important to me if something is wrong – anywhere, even out in the countryside. I was brought up to respect wildlife and not harm anything unless it harms you. I get on better with wildlife than with people!” It is no wonder when he is treated as he has been by the people at the Council and those who contribute to ruining the woods.

“If there are ten people who complain and get no response, how many of them will think ‘well if the council’s not bothered, why should I bother?’ I’ve thought ‘why bother?’ but no-one else will get involved.”

It seems no matter how many reasonable suggestions Mr Mappin makes, the council do not seem to want to help, either it takes too much effort or too much money. The

apathy of those who dump and mistreat the area and the council is ruining Little Roe Wood and the experience of those that live near it.

Some might mistake Mr Mappin for someone who likes to complain. However, he is simply a concerned resident who cares about the environment he and his neighbours live in. But the constant battling is wearing him out.

“It’s hard work. But I’ll carry on – all I can do is my best.”

by Kate Atkinson



All that remains of the Seven Ponds of Little Roe Wood.

Cricket update



© Carl Rose

Burnwood U11s Cricket team is supported by Burngreave Sports Project and are playing their first season in the Barnsley and District league. Their home ground is Whiteways cricket facility.

June/July results

- 21st June won against Darfield Under 11s cup game (Away)
- 28th June won against Wombwell (Home)
- 6th July lost to Barnsley (Away)
- 14th July won Wombwell (Away)

July/August fixtures

- 23rd July • vs Houghton Main (Away)
- Semi Final Under 11s cup
- 26th July • vs Elsecar (Away)
- 2nd August • vs Darton (Home)
- 9th August • vs Dodworth (Home)
- 16th August • vs Elsecar (Home)

Following the success of Burnwood under 11s cricket team, Burngreave Sport Project are looking to develop an under 13s team. They need local people to get involved in all aspects of running the club from secretary to kit washer to coaching. The Sports Project can pay for volunteer’s expenses and for coaching awards. For more information contact Katy Burnett on 0790 993 6381.



@Isaints

Soccer School

Mondays* • Y1, Y2, Y3 & Y4 • 4.45–6.00pm

*Except Bank Holidays

Wednesdays • Y5 & Y6 • 4.45–6.00pm

Sheffield United Academy, Firhill Crescent, Shirecliffe S4 7DR

£2 per session

For more info contact Patrick 0774 783 1856

Must be accompanied by an adult

Consent and membership forms available on site.

hallamfm academy

sheffield united fc

CHILDREN’S FESTIVAL OF SPORT

At Sheffield Community Football Centre Based At

Sheffield United

Hallam FM Academy

Saturday 21st August

11:00am - 4:00pm

Athletics	Wide range of Refreshments	Fire Engine
Cricket	Obstacle Races	Netball
Tag Rugby	Fencing	Basketball
Hawks & Owls	Chip Pan Display	Rounders
Penalty Shootout	Girls Basketball	
Boys Football	Boxing Exhibition	
Skippercise with Former boxing World Champion Paul “Silky” Jones	Bouncy Castles	
Music	Firefighters Games	
Girls Football	... and lots more !	
Face Painting		
Varied Stalls		

In support of the World Firefighters Games

For Further information contact:
George Harrison, Sheffield Community football centre (2619686)
Patrick Edwards b.c.a.t. (2502717)
Sponsored by Firhill Tenants and Residents Association
www.worldfirefightergames.co.uk

Skating @ Firs Hill



© Carl Rose

On 17th June Firs Hill Sports and Arts facility was transformed into a skate park. Ramps, skateboards, scooters and safety gear were all unloaded from a van and set up for young people in the area. Extreme Wheels Roadshow, provided by Bolsover Council, is also designed for BMX use and on the day a BMX champion and other qualified instructors were on hand to provide coaching.

The Burngreave Sports Project are hoping to make this a regular feature, travelling around the area, starting in September. Watch this space!

Osgathorpe Park

BGEF has also been working with the Friends of Osgathorpe Park (FOOP) to draw up a masterplan for their Park including putting in additional play equipment for younger children, making the playground dog-free and providing a sports facility.

ENTRANCE

- Hedges trimmed regularly or replaced with resistant to replace those with e.g. brick wall 1.8m high
- Advance Accessway (paving, mow)
- New Entrance Zone

PAVILION

- Repairs to building including new sign
- Fenced to help improve use of building
- New Entrance Zone

ACTIVE PLAY ZONE could include:

- All-weather surface
- Ball stop fence
- Floodlighting
- Control structure
- Basketball hoops
- Rocked ground
- Climbing ladder or other Adventure Play
- Playground
- Seating

ENTRANCE TO PAVILION

- New paving
- Seating Zone
- Planting
- Bin

ENTRANCE

- Litter pick
- Remove undergrowth
- Reduce tree canopy to improve visibility
- Mow grass regularly

WHITWAYS CLOSE

- Litter pick
- Cut back shrubs
- Mow grass regularly

PLAYING FIELD

- Litter pick
- Mow grass regularly

ROAD CLOSED

- Litter pick
- Cut back shrubs
- Mow grass regularly

PEDESTRIAN ONLY ZONE

- Barriers and 'A' Frames could be installed at each end of the closed section of Osgathorpe Road, so that the area becomes part of the park
- Planters
- Tree
- Gravel
- Wide path
- Visors into the park once shrubs etc are cleared

KEY

EXISTING FEATURES

- Path
- Bench
- Shrub or Tree
- Rough grass and recent tree planting
- Approx line of Field Drain: to be inspected and repaired
- Sloped Slope
- Flat area (old pitch and putt green)

PROPOSED FEATURES

- Main entrance
- Entrance through gate, 'A' Frame or similar
- Entrance Zone: could include:
 - New paving
 - Lighting
 - Pedestrian only access
 - Bin
- Seating or picnic zone
- Bin
- Activity Zone
- Fence: repaired or replaced
- Improved paths: surfaced with:
 - Gravel
 - Bank chip
 - Mown grass
- Road Closed: Pedestrian access only using 'A' Frame or gates
- Section of Boundary Wall to be repaired
- Rough grass:
 - Litter picked
 - Selected shrubs and trees removed
 - Mown regularly